

Being a Digest of Information about the Families Llewellyn, Flewellen, Flewellin, Flewelling, Fluellen, Llawalin, Lawellin, Lewallen, Lewellan, Lewellen, Lewelling, Liewallen, Louallen, Lualin, Luallen, Luelling, Luellen, and of other Divers Spellings



# Llewellyn Traces

This Publication exists for the Pleasure and Edification of Those researching the Llewellyn Family in America, and as an Aid in establishing Relationships and in seeking Common Ancestors

Volume 2 Number 4: December, 1990

## Our 1991 reunion will be held in Platte City, Missouri

The 1991 Llewellyn National Reunion—our fourth—will be held at the Airport Comfort Inn, Platte City, Missouri, October 3 through October 6, 1991.

The Airport Comfort Inn is about five miles north of Kansas City International Airport. The motel provides complimentary transportation to and from the airport. If you're driving, you'll find the motel on Interstate Highway 29 at Missouri State Highway 92, just north of the junction with Interstate 635.

This area in northwestern Missouri is rich in history. Platte City is the seat of Platte County, which was formed in 1838 and originally was part of the Platte Purchase, as were neighboring Andrew, Buchanan, and Holt counties. On the western border of Platte County, the Missouri River divides Missouri and Kansas.

Immediately across the river from Platte City is Leavenworth and Fort Leavenworth, Kansas; to the north is St. Joseph, Missouri, starting point of the Pony Express and one of the jumping-off places for the Oregon and California Trails. In addition to historic sites and reconstructed villages, the area abounds in antique shops. South of Platte County is the Kansas City area with its many attractions.

Missouri drew several different branches of the Llewellyn family in the 1800s. We feel this is an appropriate place to hold our 1991 reunion. Those on our mailing list, which includes all *Llewellyn Traces* subscribers, will receive reunion registration material in May. Room reservations should be made directly with the motel.

If you wish to make reservations at the Airport Comfort Inn now, the phone number is 816/431-5430. Duane Williams, assistant manager, is holding a block of rooms for us. Be sure to mention the Llewellyn National Reunion. Mr. Williams assures us that he will honor any cancellation up to the day for which the reservation was made.

Additional information about this reunion for all Llewellyns and Flewellens will be published in the 1991 issues of *Llewellyn Traces*.



### Vera Lawellin

*Vera Lawellin sits demurely beneath the family Christmas tree in Burlington, Anderson County, Kansas, in this photo taken about 1910.*

*Lois Vera Lawellin was born 29 April 1904 in Garnett, Anderson County, Kansas, the only child of George Randolph and Victoria (Osborn) Lawellin. Her paternal grandparents were Jephtha Wesley and Mary Jane (Jones) Lawellin; her great grandparents were Benjamin and Nancy Jane (Sutton) Lawellin; her great great grandparents were Meshach and Hannah (Brooks) Lawallin; and her great great great grandparents were Shadrach and Deborah (Burson) Lewelin.*

*We'll tell you more about Vera Lawellin in a later issue.*

## Llewellyn Traces

### In this issue

- Analysis of records** 78-81  
*We look at the 1850 Mississippi census*
- Biographies** 69-71, 77, 83  
*Nine sketches of Flewellens and Llewellyns*
- Editorial comment** 66  
*Three "ur-fathers"*
- Estates and administrations** 72  
*Continuing our exploration of Missouri wills*
- Features** 67, 84-86  
*John R. Llewellyn, descendant of Maryland Llewellyns*
- Follow-Up** 67  
*We revisit subjects we've touched upon earlier*
- Military records** 82-83  
*Brief paragraphs on several past conflicts*
- Queries and replies** 87  
*Our exchange of information with readers*
- Traditions** 68  
*The Llewellyn massacre*
- Vital statistics** 72-77  
*Births, marriages, and cemetery records from several sources*

### In the next issue

- Another Llewellyn minister
- More on the 1991 Llewellyn National Reunion
- Morris Llewellyn of Haverford
- Obituaries and vital statistics
- Tradition: 9—another oral history
- More about the New York Flewellens



## Llewellyn Traces

Editor: Martha Jewett Abbey, 781 McCarthy Boulevard, Pueblo, Colorado 81005-9704, Phone (719) 564-2210. Copyright © 1990, Martha J. Abbey. Subscriptions: \$20 a year for four issues. *Llewellyn Traces* is published in March, June, September, and December. An every-name index of the current volume is published annually. Subscribers whose orders are received before November 1 will receive the four issues published in the year of the order. Subscription orders received after November 1 will be applied to the issues for the following year. Back issues: \$25 per year or \$7.50 per issue, if available. Send your check to *Llewellyn Traces*, 781 McCarthy Boulevard, Pueblo, Colorado 81005-9704.

## Editorial comment

### As the editor sees it . . .

Some genealogists refer to the progenitor of a line that can't be traced back another generation as the "ur-father"—meaning "original father." Using that expression, and perhaps adapting it a bit for our purposes to mean the original father of a line in America, we are dealing with very few proven "ur-fathers" in our Llewellyn and Flewellen research.

To the best of our knowledge, the beginnings of some American lines start, or might start, with these three ur-fathers: Daniel Luellin, of Charles City County, Virginia; Thomas Flewellin of Long Island and New Brunswick; and Morris Llewellyn of Philadelphia and Montgomery Counties, Pennsylvania. These three men have a definite (or fairly definite) "beginning" in America. A few more may emerge as research continues.

Daniel Luellin arrived in Charles City County, Virginia, before January, 1637, probably as early as 1633. If the place where he died in 1668 and was buried "in the churchyard"—Chelmsford, England—was his original home, as the wording of his will would indicate, he came from Chelmsford. Daniel Luellin left at least one son and two daughters in Virginia. The son, Daniel Luellin, Jr. may or may not have had descendants. It is possible that some of the other Llewellyns in America during Daniel's life here, from ca. 1633 to 1668, were perhaps other sons, his brothers—even his father, which would void Daniel's "ur-father" status.

Thomas Flewellen was a minor when he was named in the will of his grandfather, Robert Ashmead. Thomas's mother Hannah (Ashmead) Flewellen is known, but his Flewellen father is unknown to Flewellen researchers. Therefore, we dub Thomas Flewellen ur-father of the Flewellen line, which may have originated in New York State, with branches going to New Brunswick, Canada. Branches from this family are now found throughout Canada and the United States. Researchers feel, but haven't proved, that this Flewellen line came to America from Stratford-on-Avon.

The Flewellens of New York and Canada seem to have no connection with the Flewellens of Virginia and North Carolina, who probably are the ancestors of the Flewellens, Fuallens, Fluellens, etc., now scattered about the southern part of the United States.

A small family history of Morris Llewellyn of Philadelphia County, Pennsylvania, tells us he bought Pennsylvania land from William Penn in Wales and he and his family came in 1686. One son was born after the family arrived in America. Many researchers have done a commendable job of searching out Morris's descendants. Since the family seems to have always retained the "Llewellyn" spelling, the hunt has been somewhat simplified. However, there is no proof that some descendants didn't change the spelling of the surname. After only two generations, there is some confusion within this family.

In future issues we'll discuss John Lewellin of Maryland; Samuel Lewellyn of Monongalia County, Virginia; Alexander Lewellen of Anderson County, Tennessee; Charles Lewellin of Lunenburg County, Virginia; Thomas Llewellyn of Brunswick County, Virginia; Thomas Llewellyn of Jefferson County, Virginia; Dick Flewellen of North Carolina; and several others. We feel that these individuals are not "ur-fathers"—but at this point neither have they been connected with the three to whom we ascribe "ur-father" status.

## Additions and changes

*Llewellyn Traces* 1:3, pages 54 and 55—Tradition: 3—Please see *Llewellyn Traces* 2:3, page 44 below.

*Llewellyn Traces* 2:1, pages 4, 6 and 7—Charles Lewellin—More information on the descendants of Charles and Elizabeth (Harrison) Lewellin is on page 69 of this issue, as well as in *Llewellyn Traces* 2:2, page 33.

*Llewellyn Traces* 2:2, page 33—Charles Lewellin—Please see *Llewellyn Traces* 2:1, pages 4, 6 and 7 above.

*Llewellyn Traces* 2:3, page 44—Tradition: 7—The 1850 census entry, in this issue on page 79, of William C. Lewellen in Tippah County, Mississippi, which we feel is the census of the father of Dr. F. E. Lewellen whose biography prompted Tradition: 7, disagrees with information in the biographical article used in Tradition: 7. Probably the census is essentially correct and the biographical material may not be accurate. We are often cautioned to “take with a grain of salt” what we find in biographical material in the county histories published so profusely in the late 1800s, and to use the information merely as a clue for further research. According to the census, William C. Lewellen, father of Dr. F. E. Lewellen, was born ca. 1794 in South Carolina, not in 1813 in Tennessee as the county history material says. If, indeed, William Lewellen was born in South Carolina, he was in Tennessee by 1829 when the oldest son listed in the census was born. Those researching this line or this area might want to study the various Fryer (Friar) entries in the 1850 Mississippi census for clues. We feel this line, if there is any validity to its three brothers tradition, may in some way tie in with that attributed to Jesse

Lewellen discussed in Tradition: 3 (*Llewellyn Traces* 1:3, pages 54 and 55).

*Llewellyn Traces* 2:3, page 55—Sam Lewellen—In *Death Records from Missouri Newspapers*, Lois Stanley, George F. Wilson, and Maryhelen Wilson (Greenville, South Carolina: Southern Historical Press, Inc., 1990), Volume 3, page 102, the name of the drowning victim (while trying to cross the Salt River in a canoe) is given as James Lewellen, not Sam Lewellen as reported in *Ralls County, Missouri*, Goldena Roland Howard (New London, Missouri, 1980). James Lewellen is identified, in this second reference, as being “of Ralls County [Missouri].” The *Liberty Tribune*, published in Clay County, Missouri, which also covered Platte, Clinton, Jackson, and Ray Counties, Missouri, dated 2 May 1862, is cited as reference for the newspaper account. Does anyone know the correct identity as well as age, etc., of this man?

*Llewellyn Traces* 2:3, page 55—Obituaries—In consulting additional DAR records of F. C. Lewallen’s grandfather, Richard Lewallen (Llewellyn), we find that F. C. Lewallen’s name was submitted to DAR as Francis Caloway (not “Calloway”) and his mother as Katherine Leinart (not “Leinhart”). Does anyone know which spellings are correct? Goodspeed’s *History of East Tennessee* (Nashville: Elder Booksellers, 1972), page 838, says “Richard Llewellyn . . . lived [at an early date] two or three miles north of Clinton [Anderson County, Tennessee].”

*Llewellyn Traces* 2:3—This “western” issue has drawn quite a response from our readers. A follow-up issue is planned for September 1991. It will feature stories about several additional Llewellyns who went west. We also have more information about

Henderson Lewelling/Luelling’s trek west, including accounts written by those who accompanied his wagon train. And we now have access to excerpts from the journal of Seth Lewelling. There will be room for more accounts if you have anything for inclusion in this anticipated second western issue; “west” can include any frontier area, at any time—not just Oregon and California, where most of our concentration was in Volume 2:3.

## It's time to renew your subscription

This issue completes Volume 2 of *Llewellyn Traces*. Volume 3 will begin with the March 1991 issue.

The subscription price for Volume 3, 1991, will remain at \$20. However, we must increase the price for Volume 4, 1992, to \$22.50 to cover increases in postage and production costs. You may subscribe for Volume 4, 1992, for \$20 at any time until January 1, 1992. Our subscription blank on page 88 reflects these rates. The number on your mailing label indicates the year through which your subscription is paid.

## How to submit your material for publication

Please share your genealogical research on your Llewellyn/Flewellyn lines with our readers. Especially welcome are series of group sheets that show relationships between generations. Please include as many references as possible. Group sheets need not be completely filled in—but the more complete they are, the better! Other records not easily accessible to researchers, such as Bible records, wills, deeds, gravestone inscriptions, old letters, journals, or diaries will be gratefully received. Please send clear photocopies.

Photographs and artwork that we can use separately or as illustrations for your material will be welcome, too. Please identify anyone in the picture. We can work only with clear original photos, which we'll return (if you send return postage). We'll have a copy made for publication.

The editor reserves the right to edit all material or to abstract from it. Related material from more than one reader may be combined in order to present a more complete record.

Our aim is to publish well-documented data. Hearsay and family tradition should be identified as such.

Please identify any material you submit with your name, address, zip code, and telephone number. We may need to contact you if there's a question about your submission that needs an answer before we include it in *Llewellyn Traces*.

Unless you include sufficient return postage, we cannot return to you what you submit. Anything you send by registered mail we'll return by registered mail.

**Tradition: 8**

**The Llewellyn Massacre**

This tradition begins a series of unpublished family traditions. At least, it comes to us, a typed copy, in the form of a family story, with no indication that it has ever appeared in print:

"As our histories tell us, the settlers beyond the Appalachian Mountains had much trouble with the Indians before and during the Revolutionary War. It was during one of these raids that Levi Llewellyn's grandfather's family was massacred.

"The family was sitting at the breakfast table, excepting a daughter, who was in the kitchen, and a son who was out doing chores, when the attack was made. The family consisted of the father, mother, and four children.

"The Indians came to the front door, and before the father and son could get their guns, they were shot down by the Indians. The daughter ran from the back door toward the house of a neighbor, a distance of several miles, and the other son, seeing her running, knew that an Indian attack was being made. He

started after her, shouting for her to wait for him, but she was so badly frightened that she would not and [she] dropped dead from exhaustion at the neighbor's house.

"So one son, Levi Llewellyn's grandfather, was the only member of the family saved. A posse was formed and started on the trail of the Indians but no trace of the mother did they find. Quite a distance away they found the infant child where its brains had been dashed out against a tree. This caused the son to have such a hatred against the Indians that he never let an opportunity of fighting them pass by.

"Therefore in the year 1782 when Colonel Crawford started his expedition against the Indians in northern Ohio, this son, Levi Llewellyn's grandfather, and a few companions rode from Washington County, Pennsylvania, to join him."

Reference: *Llewellyn Family History*, written before 14 May 1926 by Grace Ethel Llewellyn Setterfield, of Marion, Ohio, and sent to the editor in June, 1987, by Mrs. Setterfield's daughter, Opal Anita Setterfield Augenstein.

**In pursuit of Tradition: 8**

Mrs. Setterfield's family story goes on to say that the family knew very little about this grandfather, not even his name. They believed he had at least two sons, Lemoine and Samuel, and a daughter who married a Martin. Levi Llewellyn was the son of Samuel.

Levi Llewellyn was born 29 January 1811, probably in Washington County, Pennsylvania. In 1834 he married, at Washington, Pennsylvania, Annela Featherlin, who was born 12 May 1811. Early in the spring of the next year, 1835, they started for Ohio in a covered wagon. Lemoine Llewellyn, Levi's brother, accompanied them. In Ohio, they stayed with relatives for a while, and for a year lived with a Peak family.

Samuel Llewellyn, Levi's father, bought Levi a 40-acre tract of land which was located on a road that divided Marion and Morrow Counties, Ohio. Over the years Levi bought more land and eventually owned 130 acres.

We know little that would add to this story. But we'll pursue this family and this tradition.

**John R. Llewellyn, descendant of Maryland Llewellyns: from Virginia and Kentucky to Mississippi, and then to Chicot County, Arkansas**

The 1850 census entry of John R. Llewellyn in Chicot County, Arkansas (page 187), prompted us to explore once again the Llewellyns in Maryland (see *Llewellyn Traces* 1:1, pages 12 and 13; 1:2, pages 35 through 39; and 2:3, pages 57 and 58).

John R. Llewellyn in the Chicot County census was John Richard Llewellyn (1803-1873), the son of Richard (1741-ca.1832) and Philippa (Bate) Llewellyn of Jefferson County, Kentucky. From Richard Llewellyn we can go back another generation to his father,

John Llewellyn (1714-1785), of St. Mary's County, Maryland.

We have used state and county records, including court records, marriages, and wills, as well as a variety of family records to document this family. The references listed at the end of this article were supplemented by those cited in material previously published in *Llewellyn Traces*.

We feel that John Llewellyn (1714-1785), who married Elizabeth (or Mary) Jordan, probably was the grandson of John Lewellin, who came to America with, or

shortly after, Lord Baltimore. This early John Lewellin was clerk of the Maryland Court, became the first land commissioner of Maryland, and died ca.1698 in St. Mary's County.

Although we are relatively confident with this relationship between the first John and the John who was born in 1714, we have no proof connecting the three generations involved, and some of our circumstantial evidence is a little shaky. Letters written by the great granddaughter of the John

*Continued on page 84*

### Granddaughter of Charles Lewellin settled in Missouri

In *Llewellyn Traces* 2:2, page 33, we discussed Charles E. Lewellin, great grandson of Charles and Elizabeth (Harrison) Lewellin of Bedford County, Virginia, who was the subject of a biographical sketch in the *History of Randolph and Macon Counties, Missouri* (n.p.; n.d.), pages 963 and 964.

Now we discuss a great aunt of Charles E. Lewellin and granddaughter of Charles and Elizabeth (Harrison) Lewellin, Catherine E. (Lewellin) Akers. Catherine E. was an aunt of the father of Charles E. Lewellin, John Akers Lewellin.

In the *History of Howard and Chariton Counties, Missouri* (St. Louis: National Historical Company, 1883), on pages 838 and 839, is a biographical article about Simon P. Akers, husband of Catherine E. Lewellin, who settled in Clark Township, Chariton County, Missouri, in 1851.

The article begins, "Simon P. Akers, a pioneer settler and comfortable farmer of Clark Township [Chariton County, Missouri], is a native of the Old Dominion, born in Campbell County on the 8th of September 1827. He was reared in his native county and brought up to the occupation of a farmer, which he has since continued to follow.

"On the 18th of September 1849 he was married in that county to Miss Catherine E., daughter of John and Elizabeth (Bryan) Llewellyn (*sic*), and two years afterwards removed to Missouri."

Catherine (Lewellin) Akers's grandparents, Charles and Elizabeth (Harrison) Lewellin of Campbell County, Virginia, were the subjects of an article in *Llewellyn Traces*, 2:1, pages 4, 6 and 7. Bible records cited in *Llewellyn Traces* place Catherine's birth on 13 April 1831.

The biographical sketch of

Simon P. Akers continues in the typical style of the county histories of the late 1800s, describing his 200 acres of "good land, all under fence," and his [home] place "substantially and comfortably improved, kept in a good farm-like condition."

Simon P. Akers was described as a highly respected citizen of his township, with a deep interest in education, a leader of the community in school affairs. He was a director of local schools for more than 20 years, served as justice of the peace, and held other local offices, which were not described. He and Catherine were members of the O. S. Presbyterian Church.

Twelve children were born to Simon P. and Catherine (Lewellin) Akers. Those named in the biographical sketch were Elizabeth [Ann Elizabeth?], who married John W. Switzler; Virginia C., who married W. H. Green; Nannie D., who married Alonzo Withers; Ella M., Charles E., and William Wiot. The article says six other children died in infancy. The Bible records cited in our article in *Llewellyn Traces*, 2:1, list George M. Akers and James Rice Akers, who probably were two of the children who died young.

The Simon P. Akers sketch was sent by Patricia Stewart Johnson, Sumner, Missouri, who came across it while doing research on her Llewellyns of Chariton County, Missouri. Pat writes that Simon Akers is listed on the 1860 and 1870 U. S. Censuses of Chariton County, Missouri.

Using the biography of Simon P. Akers to expand our knowledge of the Campbell County, Virginia, family of Charles Lewellin is an example of the importance of researching allied names along with principal names. Another example of the use of this approach is in our article elsewhere in this issue about John R. Llewellyn of Chicot

County, Arkansas, where corroborating evidence contained in the *Humphreys Genealogy* helped connect at least four generations of Llewellyns of Maryland.

In a future issue of *Llewellyn Traces* we will discuss another son of Charles and Elizabeth (Harrison) Lewellin, Green B. Lewellin. Children of Green B. and Elizabeth A. (Carter) Lewellin also went to Missouri.

### From Tennessee to Pennsylvania

Matthew Lewellen was born 13 May 1775 in Tennessee and was brought up in the Presbyterian Church. According to records of the Moravian Church, Lancaster, Pennsylvania, on 11 October 1799 he married the widow Anna Maria (Dickert) Gill, daughter of Jacob and Johanne (Hoeffler) Dickert, of Lancaster County, Pennsylvania.

Anna Maria Dickert, born 6 October 1766, married James Gill, merchant, 26 July 1787. They were the parents of two sons and a daughter. James Gill died in May, 1796. By his marriage to Anna Maria (Dickert) Gill, Matthew Lewellen had one son, Samuel Dickert Lewellen, who survived his parents. Matthew Lewellen died in the fall of 1802. The date is given in church records as both 28 October and 20 November. Anna Maria (Dickert Gill) Lewellen died 8 February 1806.

The foregoing was adapted from *Pennsylvania Vital Records*, Vol. I and Vol. II (Baltimore: GPC, 1983): Vol. I, pages 415 and 418; Vol. II, page 560.

### Index to Volume 2

~~Subscribers will receive the index shortly. It contains so many names that we couldn't bind it with this issue!~~

included  
separately  
on this site

## A Lewellen you should know

Ever since he entered Ball State University in Muncie, Indiana, as a freshman in 1933, Dr. John O. Lewellen has been an integral part of the school's athletic program.

Over the years John Lewellen has compiled an impressive list of credentials in an incredible number of sports—as a participant and as a coach. He is a Lewellen you should know.

John Lewellen's participation in sports at Ball State began as a freshman, climaxed that year when he won four letters in varsity football, baseball, basketball, and track. In track at Ball State he competed in the high jump, broad jump, shot put, discus, and javelin throw. In succeeding years, he won the javelin event three times, and in Little State competition he set a school record of 187 feet, 2-1/2 inches, a record that stood for 17 years.

In 1937 he won the Rocky Mountain States AAU swimming championship in three-meter diving.

Upon graduation in 1937, John Lewellen joined the Ball State athletic staff as tennis coach. In 1938 and 1939 he was cross country coach, and in 1940 was named golf and swimming coach. Except for three years, 1943 to 1946, when he served as a lieutenant in the Navy and took a year's academic leave of absence, he remained golf coach until 1963 and swimming coach until 1967. He also served ten years as assistant football coach.

In the 1960s Dr. Lewellen visited universities all over the country seeking data on swimming facilities. His findings and recommendations were incorporated into many of the features of the Ball State University pool, which was built in 1968 and which on 27 June 1980 was dedicated as the John O. Lewellen Aquatic Center.



**DR. JOHN O. LEWELLEN**

Nationally recognized as a teacher and swimming coach, Dr. Lewellen guided Ball State's swimming program from its inception. In planning the new pool, he stressed the need for a facility that would serve as a classroom for swimming and lifesaving classes, and would include facilities for swimming education for the handicapped, as well as a center for NCAA swimming competition and intramural and recreational swimming.

During the five years between 1965 and 1970, John Lewellen was head of the men's physical education department at Ball State. He was named Director of Aquatics in 1970.

In 1975 John Lewellen was given Ball State's Outstanding Faculty Award and Service Award. In 1978 he was named to the Ball State Athletic Hall of Fame. He also was among five athletes named to the first Delaware County (Indiana) Athletic Hall of Fame.

John O. Lewellen was born in Dunkirk, Delaware County, Indiana, 25 February 1914. He graduated Muncie Central High School, class of 1933. He played on the Muncie Midgets YMCA national basketball championship teams of 1932 and 1933, earning All-American honors in 1933. In 1936 he was a member of Muncie's YMCA basketball team which won the state title and participated in Olympic trials.

John received his M.A. degree from Ohio State in 1940 and his Ph.D. from Stanford in 1951. He also has done graduate work at the University of California, Berkeley, and at the University of Colorado.

In 1941, in Muncie, Indiana, he married Julia Ann Harris, daughter of Orla P. and Julia (Winslow) Harris. Their three children are Sandra Lee, who is married to Donald Kuehler; Nancy Sue, who married Arthur Cota; and Richard Alan, who married Mary Pfundstein. There are seven grandchildren and five great grandchildren.

Dr. John O. Lewellen is the namesake of his paternal grandfather, John O. Lewellen whose obituary was published in *Llewellyn Traces* 2:1, page 9.

John and Judy Lewellen attended the 1987 and 1989 Llewellyn National Reunions, and we have it on good authority that they plan to attend the 1991 reunion.

Dr. John O. Lewellen is a Lewellen you should know.

[We are grateful to John's niece, Randi Berry, of Newbury Park, California, for providing information used in this article.]

---

*(Right) The Aquatic Center at Ball State University, Muncie, Indiana, is named for Dr. John O. Lewellen. The building was dedicated to the former swimming coach on 27 June 1980.*



## Biographical sketches

### Sarah E. Llewellyn Lowry

Sarah E. Llewellyn, born ca.1815, married, as his second wife, Robert Lowry, probably in Tishomingo County, Mississippi, ca.1843. According to his biographical sketch, he was a "merchant."

Robert Lowry was born in South Carolina in 1806, the son of John Lowry, born ca.1776, who at one time was a South Carolina Senator. Robert Lowry married (first) Jemima Rushing, probably in the Chesterfield District of South Carolina and in 1840 moved to Tishomingo County, Mississippi.

A son of Robert and Jemima (Rushing) Lowry was Mississippi Attorney General during the Civil War and was elected Governor of Mississippi in 1881.

Sarah E. Llewellyn and Robert Lowry were the parents of at least one child, a daughter born ca.1844. This daughter, surname Lowry, married James M. Arnold, born ca.1836, who served for a time as Chief Justice of Mississippi.

Reference: *Biographical and*

*Historical Memoirs of Mississippi, Genealogical Abstract*, Norman E. Gillis (n.p.: n.d), pages 15, 357, 364, and 365.

### Ann T. Fluellen Flanagan

Ann T. Fluellen, "daughter of Anne Thomas of Philadelphia," was born 28 August 1752 in Dinwiddie County, Virginia. In 1784 she married Reuben Flanagan, who was born 6 March 1764 in Newberry District, South Carolina.

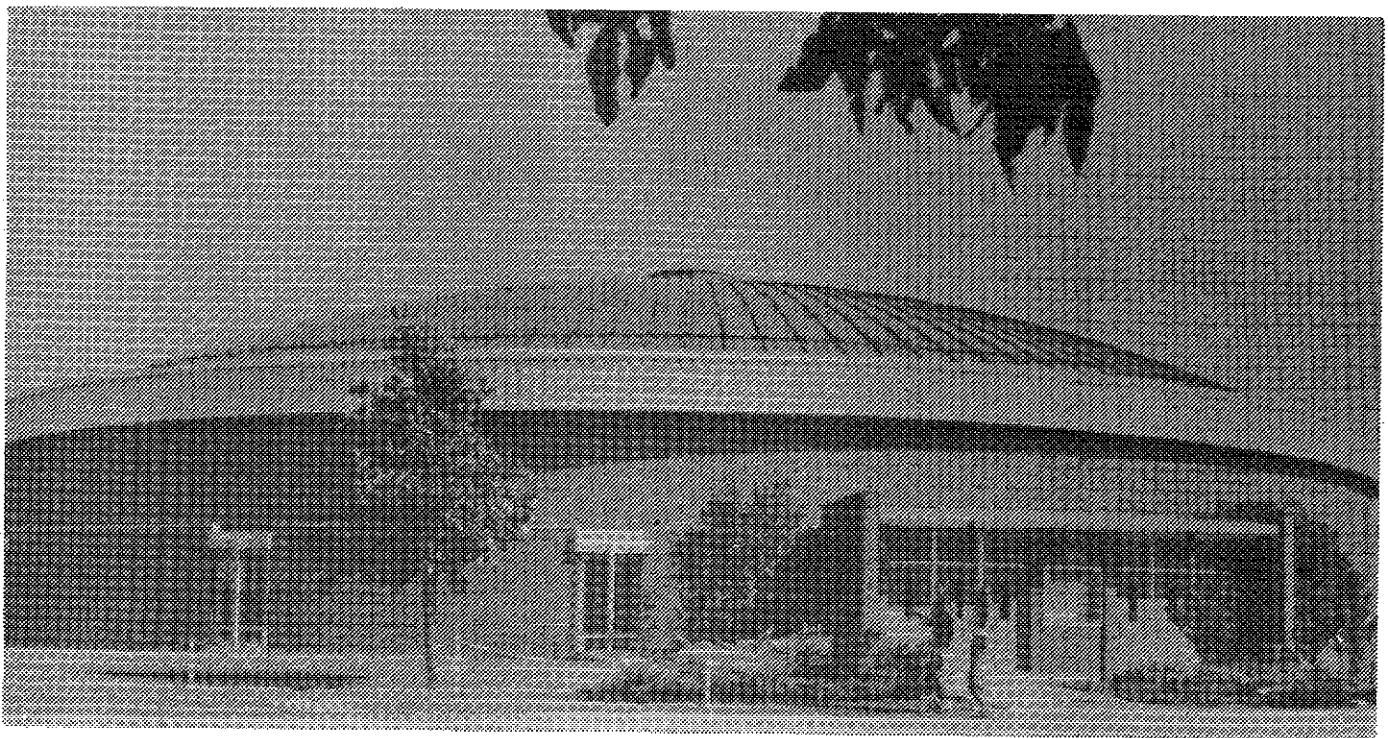
Their children, both born in Laurens District, South Carolina, were James Flanagan, born 18 October 1785, and Elvira Flanagan, born 21 May 1787. Through the marriages of these two children, James Flanagan to Margaret Valentine on 6 June 1813 and Elvira Flanagan to Henry Gray on 27 October 1808, allied names associated with this family include Valentine, Gray, Tench, Linch, Childs, Howard, Dade, Lomax, Smith, Dawkins, McKnight, Row, and Atkinson.

This information comes from

records found in Ann T. (Fluellen) and Reuben Flanagan's family Bible, which was published by Mark and Charles Kerr, "His Majesty's Printers," Edinburgh, MDCCLXXXIX (1789). Records were copied by family members in 1953. At that time the Bible was owned by two great, great, great, great granddaughters who lived in Senoia, Coweta County, Georgia.

Ann T. (Fluellen) Flanagan died 3 June 1826, and her husband, Dr. Reuben Flanagan, died on 3 July 1829. Although several tombstone inscriptions from a family cemetery on the John H. Tench farm near Senoia, Georgia, were copied for an accompanying article in *Cemetery and Bible Records* (see below), there is no indication that Ann and Reuben are buried there. John H. Tench was the husband of one of the Flanagan's granddaughters.

Reference: *Cemetery and Bible Records*, Frances Adine Cook, compiler (Jackson: Mississippi Genealogical Society, 1955), Volume II, pages 26 to 28.



## More Missouri wills

These estate and administration records of Monroe and Pike Counties, Missouri, are a continuation of material published in *Llewellyn Traces* 2:2, pages 36 and 37. Material below includes years 1900 to 1977; material previously published covered years 1842 to 1881.

### John W. Lewellen

1900, 8 August (Monroe County Estate Box 119): Mollie R. Mudd petitioned that Mary E. Lewellen, widow of John W. Lewellen, be appointed administrator of estate.

### John W. Lewellen

1901, 15 July (Monroe County Estate Box 130): Heirs: widow, Mary E.; children, James R., Teresa J. Finks, John W., Cecil M., Mollie R. Mudd and Chas. T. Lewellen. James R. resides in Kansas; Cecil M. in Shelby County, and Charles T. in Clinton County, Missouri.

### Thomas Lewellen

1903, 2 July (Monroe County Estate Box 128?): Will or administration: [date given is date of death]

widow Rebecca J.; dau. Lena Bondurant, wife of C. H. Bondurant; James W. Lewellen, Chas. T. Lewellen, Orlando I. and Francis M. Lewellen, sons, all of Monroe County; Perry D. Lewellen of Vineta; J. T. [unclear whether Perry D. and J. T. are sons or grandsons] and Aurthur (*sic*) S. Lewellen, grandson, son of Eugene Lewellen, dec'd, who resides in Hannibal.

### Thomas D. Lewellen, deed

1931, 9 November 1931 (deed): Deed made by son J. R. Lewellen and wife Bernice gives to Nettie, "present wife" of J. R. Lewellen's father [Thomas D. Lewellen] deed of property in Frankford.

### Thomas D. Lewellen

1934, 13 March ([Pike County?]) Will Book 20): Names son John R. Lewellen executor and to have estate, with exception of property in Frankford deeded to Nettie, "present wife."

### Charles T. Lewellen

1943, 9 November (Monroe County

Estate Box 225): Heirs: widow, Lula Kate Lewellen, and Harvey Lee Lewellen of Paris, Missouri.

### Harvey Lee Lewellen

1953, 8 December (no reference given with this entry): Will or administration. Evelyn Lucille Lewellen, widow and heir [it is unclear, but Harvey Lee Lewellen may have had three children: Rebecca, dec'd, Sanford Lewellen, of Paris, Missouri, and Francis].

### James William Lewellen

1956, 23 May 1956 (Monroe County, Will Book I, p.130): Will. Dau., Iva Mae Homrighausen; to Clara May Lewellen, appliances and \$5,000.

### Artie Lewellen

1977, 26 August (no reference given): Will or administration. Heirs, niece Helen Whitten and nephew Carl Lewellen, both of Hannibal, Missouri. Artie Lewellen was "of Clarksville, Missouri." (See *Llewellyn Traces* 1:3, pages 74 and 75, and 2:2, page 27.)

## Vital statistics

### Georgia births from LDS records

#### Barrow County

Flewellyn, Joseph Alexander, to (parents not listed), 13 May 1888, Barrow County (LDS Batch No. 8523230/21).

#### Hall County

Flewellyn, Joseph Alexander, to Joseph Alexander and Naomi Ruth (Wiley) Flewellyn, 14 November 1913, Gainesville, Hall County (LDS Batch No. 8523230/18).

#### Hancock County

Flewellen, Alexander, to William and Betty (Holloway) Flewellen, 12 May 1763, Hancock County (LDS Batch No. 7515710/17).

Flewellen, Elizabeth, to Alexander and Katie (Peoples) Flewellen, 10 January 1799, Hancock County (LDS Batch No. 8124380/70).

Flewellen, Mary Henry, to Alexander and Katie (Peoples)

Flewellen, 10 August 1800, Hancock County (LDS Batch No. 8124380/70).

Flewellen, William Henry, to Alexander and Katie or Thessy (Peoples) Flewellen, 10 August 1802, Hancock County (LDS Batch No. 7515710/17).

Flewellen, Edward Traylor, to Alexander and Katie (Peoples) Flewellen, 30 December 1807, Hancock County (LDS Batch No. 8124380/70).

Flewellen, Louisa Cook, to Alexander and Katie or Thessy (Peoples) Flewellen, 14 November 1812, Hancock County (LDS Batch No. 8124380/69).

#### Lamar County

Flewellyn, Theron Shepherd, to James Edward and Jessie Willie (Shepherd) Flewellyn, 19 September 1910, Goggins, Lamar County (LDS Batch No. 8300004/30).



**Twiggs County**

**Flewellen, Martha**, to Abnor (sic) and Ann (Lane) Flewellen, (no day, month) 1770, Twiggs County (LDS Batch No. 8428402/81).

**Flewellen, Nancy**, to Abnor and Ann (Lane) Flewellen, (no day, month) 1772, Twiggs County (LDS Batch No. 8521204/43).

**Flewellen, Eliza**, to Abnor and Ann (Lane) Flewellen, (no day, month) 1774, Twiggs County (LDS Batch No. 8521204/43).

**Flewellen, Margaret**, to Abnor and Ann (Lane) Flewellen, (no day, month) 1776, Twiggs County (LDS Batch No. 8521204/43).

**Flewellen, Abnor**, to Abnor and Ann (Lane) Flewellen, (no day, month) 1777, Twiggs County (LDS Batch No. 8521204/44).

**Flewellen, William A. Good**, to Abnor and Ann (Lane) Flewellen, (no day, month) 1779, Twiggs County (LDS Batch No. 8521204/44).

**Warren County**

**Flewellen, Abnor**, to (no parents listed), (no day, month) 1750, Warren County (LDS Batch No. 8521204/42).

**Georgia marriages from LDS records**

**Baldwin County**

**Fuellen, Elizabeth L.**, and Tapley Holt, 22 December 1809, Baldwin County (LDS Batch No. 7101815/36).

**Flewellen, Elizabeth**, and Robert Humber, 4 May 1815, Baldwin County (LDS Batch No. 8124380/71).

**Barrow County**

**Flewellyn, Joseph Alexander**, and Naomi Ruth Wiley, 7 July 1912, Winder, Barrow County (LDS Batch No. 8523230/25).

**Clay County**

**Flewellyn, Dorcas**, and Horace

**Williams**, 11 August 1877, Clay County (LDS Batch No. 8006302/74).

**Flewellen, Mumford**, and Sarah Williams, 28 December 1884, Clay County (LDS Batch No. 8025303/19).

**Jones County**

**Fluellin, Gideon**, and Mary Parker, 5 December 1820, Jones County (LDS Batch No. A458243—"A" indicates adult christening).

**Flewellan, Mary**, and I. B. Johnson, 25 November 1842, Jones County (LDS Batch No. 7904405/39).

**Twiggs County**

**Flewellen, Abnor** (sic), and Ann Lane, (no day, month) 1770, Twiggs County (LDS Batch No. 8521204/45).

**Flewellen, Martha**, and Timothy Mathews, 13 April 1801, Twiggs County (LDS Batch No. 8428402/87).

**Warren County**

**Flewellen, Mary Henry**, and William Holiday Godwin, 16 July 1818, Warren County (LDS Batch No. 8124380/71).

**Flewellen, Alexander**, and Katie or Thessy Peoples, 22 February 1797 (LDS Batch No. 8124380/71).

**Kentucky marriages**

Unless indicated otherwise, these records are from county records.

**Butler County**

**Fluallen, Mary**, and James Haws, 1 March 1825 (LDS Batch No. 7307510/87).

**Fluallen, Mary**, and James F. Hawes, 13 August 1825 (LDS Batch A456336—"A" indicates adult christening).

**Fluallen, Nancy**, and James Hawes, 1 August 1825 (LDS Batch No. 8610607/8).

**Fluallen, Nancy**, and John Haws, 12 April 1830 (LDS Batch No. 7204801/72).

(The above four records are printed as listed in LDS records; since the source of each is an LDS patron and not a country record, there is a chance of error.)

**Fluallen, Jane**, and James C. Childers, 14 March 1830 (LDS Batch No. 7206648/90); a second record for these two persons gives the date 14 March 1834 (LDS Batch No. 7831204/37).

**Fluallen, Eliza**, and William Penley, 14 February 1842 (LDS Batch No. 7829204/38).

**Fluallen, John C.**, and Sarah Ann Bradley, 9 January 1851 (LDS Batch No. 7416102/3).

**Fluallen, Sarah A.**, and Russell G. Brown, 30 March 1857 (LDS Batch No. 7801811/35); a second record, evidently for this same couple: **Flewallen** (sic), **Sarah A.**, and **Russel** (sic) G. Brown has the date of 31 March 1857 (LDS Batch No. 7514712/56).

**Fluallen, Elizabeth F.**, and James C. Haws, 7 May 1863 (LDS Batch No. 7204801/73).

**Fluallen, John G.**, and M. T. Hoops, 23 January 1878.

**Fluallen, John C.**, and M. J. Benson, 1 February 1878; a second record lists **Flewallen** (sic), **John C.**, and **Mary Jane Benson**, same date (LDS Batch No. 8717305/87).

**Flewallen, Mary E.**, and James Calvin Doolin, 28 April 1880 (LDS Batch No. 8700701/54).

**Fluallen, S. F.** (female), and L. B. Pendley, 5 October 1881 (LDS Batch No. 7829204/32).

**Fluallen, M. E.** (female), and Morgan Pendley, 22 March 1882 (LDS Batch No. 7829204/31).

**Fluallen, Laura Jean**, and George W. Gardner, 28 May 1884 (LDS Batch No. 7416102/3).

**Carroll County**

**Lewellyn, Henry**, and Julia Ann Allcorn, 25 September 1857.

**Lewellyn, Peter**, and Sarah A.

Burnish, 8 December 1859.

**Christian County**

**Lueallen, Ann**, and Walter Lewis, 27 January 1802.

**Lueallen, Anna**, and Walter Tims, 4 February 1808.

**Fayette County**

**Llewellyn, Susia**, and Capt. William N. Danks, of Chicago, 4 January 1864.

**Hardin County**

**Lewallen, Mary**, and Joshua Binney, 27 August 1798.

**Llewellyn, Mrs. Celia**, and Benjamin Tobin, 10 December 1829, by C. Lovelace.

**Henderson County**

**Llewellyn, Enoch**, and Sophronia Sandefur, 24 (no month), 1868 (no source given).

**Jefferson County**

**Lewellen, Samuel**, and Elizabeth Rucker, widow, 22 April 1815 (bondsman, Thomas Kelley, witness, James Stewart; married by John Todd).

**Lewellen, Thomas** (ae. 21, permission by Nancy Lewellen), and Anna Adams (also given as Anna Davis), 13 April 1818 (bondsman, Adam Dennison).

**Lewellon** (sic), **Mary**, dau of Samuel, and Wm. Erott (Everitt), 11 May 1818 (license); 15 May 1818 (marriage by Dan C. Banks).

**Llewellyn, Nancy**, dau of Samuel, and Henry W. Sprague, 27 May 1820 (license, bondsman, William Everitt); 28 May 1820 (marriage by Daniel C. Banks).

**Lewellen, Samuel**, and Mrs. Patsey Lamphere, widow, 26 October 1820 (license, bondsman, Henry Sprague); 26 October 1820 (marriage by Daniel C. Banks).

**Llewellyn, Eliza B.**, dau. of Richard Llewellyn, and Henry C. Dorsey, 27 March 1823 (license, bondsman, James Harrison); 3 April 1823 (marriage by Rev. Richard Corwine, Louisville).

Lewellyn, Stephen W., and Rachel Ann Powell, 25 October 1850 (LDS Batch No. 7127111/96).

**Knox County**

Lewallen, Anderson, and Sally Bains, 9 June 1823 (LDS Batch No. 8130702/99).

**Mercer County**

Lewalling (sic), Stephen, and Peggy Pritchett, 5 January 1801 (bondsman, Isaac Robertson).

Lewelling, John, and Nancy Bottom, widow of John Bottom, 22 March 1804 (bondsman, James Clark); 25 March 1804 (marriage).

Lewallin, Elizabeth (Walter Crow gives oath that bride was "21 last May"), and Aaron Rynerson (Rinearson), 9 July 1814 (bondsman, Basil Prather; 14 July 1828 (marriage).

Lewallen, Enoch, and Rebecca Vancrivi (sic), 29 September 1836 (source unknown).

Lewullen (sic), William A., and Mary Campbell, 19 March 1838 (LDS Batch No. 7435402/45).

Lewallen, Thomas, and Ann Sanders, 30 April 1840 (source unknown).

Lewallen, H. H., and Anna ?, 30 May 1850 (source unknown).

**Nelson County**

Lewellen, Hannah, and John Bland, 13 November 1795 (LDS Batch No. A170529/0342).

Lewellen, Isaac, and Clore (Chloe) Stephens, 29 March 1796, by Jos. Milburn.

**Ohio County**

Lewellan, Samuel, and Elizabeth White (consent given by William White for dau.), 16 August 1805 (bondsman, Jacob Lewellan).

Lewallen, John, and Martha Campbell (consent given by William Campbell for dau.), 17 September 1810 (bondsman, Jacob Lewellen).

Lewellin, Martha, and Jacob M.

Barnett, 13 February 1812 (LDS Batch No. 7726409/85).

Lewellan, Samuel, and Sally Iler, no date for bond; 20 February 1812 (by Rev. Benjamin Kelley).

Lewallen, Jacob, and Elizabeth Rackerby (who certified there was no objection to "Jacob Lewallen marrying me," signed 20 May 1816, witnessed by James Lewallen), 21 May 1816 (bondsman, James Lewallen).

Luallin, Jams (Lewallen, James), and Polly Wiley, 5 February 1817 (bondsman, William Wylie), 13 February 1817 (marriage by Rev. Thos. Taylor).

Lewellan, Joslah, and Jane Thomas, 23 October 1819 (bondsman, Alex Barnett).

Lewellen, John, and Elizabeth Lenham, 2 March 1820 (bondsman, Leonard Leach), official: Benjamin Kelley.

Luallin, Jabus (Lewallen, Jabish), and Peggy Midkiff (Midciff), 10 August 1821 (bondsman, Benjamin Midkiff); 21 August 1817 (marriage by Rev. Thos. Taylor).

Lewellen, Jabesh, and Sally Taylor, 5 October 1828 (bondsman, Thomas Taylor; official: William Hart).

Luallen, John, and Martha J. White, 23 July 1857.

Lewallen, John, and Charlotte Stevens, 11 September 1866.

Lewallen, Franklin, and Sarah C. Trogden, 10 December 1877.

Luallen, George, and Sarah Westerfield, 26 November 1879 (LDS Batch No. 8213905/33).

**Oldham County**

Lewallen, Woodson, and Mary Pruitt, 6 August 1829 (LDS Batch No. 7106429/72); a second record for Woodson Lewellen (sic), and Nancy (sic) Pruitt, 26 August 1829 is from LDS Batch No. 8233308/78.

**Shelby County**

Luellen, Jesse, and Sally Benson, 22 February 1909.

**Washington County**

Lewellen, Samuel, and Elizabeth Sadler, 10 May 1794.

Lewallen, Samuel R., and Jeruslina Adams, 21 December 1824 (married by Joseph T. Whitehead).

Lewallen, Henry, and Mary Jane Thompson, 1 August 1843 (married by A. P. Anderson).

Lewallen, Samuel A., and Perlina Wells, 5 October 1845 (bondsman, John Hall; married by Joel Gordon, Baptist).

**Mississippi cemetery records**

**Adams County**

*Stanton Cemetery (southeast corner of Adams County)*

Lewellyn, Elizabeth L., b.1778, d.21 February 1831.

Reference: *Cemetery and Bible Records* (Jackson: Mississippi Genealogical Society, 1958), Volume V, page 182.

**Tate County**

*Bethesda Cemetery (corner of Brown's Ferry Road and Highway 51—South Panola Street—in Senatobia, Mississippi; formerly the Presbyterian Cemetery and property of the church, Bethesda is now owned and maintained by the city as its principal cemetery; inventoried between October 1971 and March 1972).*

Lewallen, Jan, 1878-1944.

W. J. LeWallen, 1894-1945.

Reference: *Cemetery and Bible Records* (Jackson: Mississippi Genealogical Society, 1976), Volume XVI, page 118.

**Tippah County**

*Lebanon Church Cemetery (5th District, just over the Tippah county line near Alcorn County; cemetery inventoried 1954).*

Lewellen, Samuel Darrell, son of Howard and Ruby Lewellen,

31 March 1938-11 February 1940.

Lewellen, Vester, 1 March 1886-11 January 1941.

Lewellen, Rebecca Jones, w/o W. S. Lewellen, d.14 February 1903, ae.48 years.

Lewellen, W. S., d. October 1907, ae.56 years.

Lewellen, Wesley V., son of L. F. and M. E. Lewellen, 6 November 1914-24 July 1916.

Reference: *Cemetery and Bible Records* (Jackson: Mississippi Genealogical Society, 1972), Volume XIV, page 188.

**Mississippi deaths**

**Hinds County**

Fleuellen, Thomas, ae.80, widower, born in Virginia, died in September 1849 in Hinds County, cause of death "fever."

Fleuellen, Elizabeth, ae.52, married, born in Georgia, died in June 1850 in Hinds County, cause of death "brain."

Reference: *Mississippi 1850 Mortality Schedules*, Irene S. Gillis, compiler (Shreveport, 1973), page 17.

**Mississippi marriages from county records**

**Copiah County**

Fleuellen, Bettie, and J. I. Porter, 20 October 1875.

Fleuellen, Felix, and Nancy Tatom, 12 July 1877.

**DeSoto County**

Fleuellen, William, and Theresa J. Bailey, 18 December 1851.

Fleuellin, Lydia Ann, and Henry Richardson, 31 January 1853.

Fleuellin, James, and Martha F. Brigrance, 13 March 1856.

Fleuellen, Alfred, and Jane Kenamore, 1 April 1866.

Flewelling, Mary Ann, and Robert Wilkins, 3 September 1867.

Flewellen, W. E. (female), and H. L. Carlisle, 2 November 1871.

Fluellen, James E., and G. J. Garner, 8 January 1880 (in this record James E. is listed as a female; LDS Batch 7316208/70 gives birth of James (sic) Elizabeth Flewellen on 1 May 1852, Olive Branch, DeSoto County, Mississippi, no parents named).

Fluellin, Mattie, and R. L. Briggance, 14 August 1882.

**Hinds County**

Flewellen, Henry, and Elizabeth R. Morgan, 27 December 1842. (This record, not a county record, is LDS Batch 7026412/15).

Flewellen, Nancy, and B. F. Jones, 14 October 1860. (This record, not a county record, is LDS Batch 8726508/52).

Flewellen, E. J., and Charles T. Farmer, 24 July 1872.

Flewelling, U. S., and Mary Morgan, 11 February 1879.

Flewellyn, J. H., and Jennie Herron, 1 May 1879.

**Leake County**

Fluellen, Charlotte, and Washington Childress, 28 August 1886.

**Oktibbeha County**

Flewellen, M. A. (female), and H. A. Ciine, 20 November 1867.

Flewellen, Harrit (sic), and Alfred Forte, 28 February 1880.

Fluellen, Harriett, and Buck Simpson, 6 August 1885.

**Sharkey County**

Flewellyn, Louisiana, and C. G. L. Humphrirus (sic), 6 April 1883.

**Tate County**

Flewallen, M. A. (female), and A. D. Stallons, 22 December 1875.

Fluellen, Vina, and Alex McCracken, 30 December 1875

Flewelling, Wille (female), and Mack Crystal, 11 November 1879

Flewellan, Laura, and W. R. Jones, 21 July 1881.

**New York births from LDS records**

**Cayuga County**

Flewelling, Elizabeth, to Benjamin and ? Flewelling, 8 August 1805, Scipio Meeting, Cayuga County (LDS Batch No. 8627506/2).

Flewelling, Stephen B., to Benjamin and Mary (? ) Flewelling, 21 April 1807, Scipio Meeting, Cayuga County (LDS Batch No. 8627506/2).

Flewelling, Mary Anna, to Benjamin and Mary (? ) Flewelling, 14 April 1810, Scipio Meeting, Cayuga County (LDS Batch No. 8627506/2).

**Dutchess County**

Flewelling, Elizabeth, to John and ? Flewelling, 3 March 1752, Presbyterian Church, Rumbout, Dutchess County (LDS Batch No. C510291—"C" indicates christening record.)

**Ulster County**

Fluellen, John, to Ogden and Betsy (Tyce) Fluellen, 1 July 1796, Dutch Reformed Church, Wawarsing, Ulster County (LDS Batch No. C503311—"C" indicates christening record).

**Warren County**

Flewelling, Francis T., to Francis and Jedidah (Tyler) Flewelling, 26 July 1831, Warren County (LDS Batch No. 8019106/71).

**Westchester County**

Flewelling, Amy, to Robert and ? Flewelling, 23 September 1791, New Castle Township, Westchester County (LDS Batch No. 8213905/48).

Flewelyn, Betsy, to John and Esther (Thorn)Flewelyn, (no day) March 1795, Westchester County (LDS Batch No. 8624805).

Flewelling, Sylvester, to Aaron and ? Flewelling, ca.1826, New Castle Township, Westchester County (LDS Batch No. 7122332/69).

Flewelling, Samuel, to Aaron and ? Flewelling, ca.1831, New Castle Township, Westchester County (LDS Batch No. 7122332/69).

Flewelling, Horace P., to John and ? Flewelling, ca.1833, New Castle Township, Westchester County (LDS Batch No. 7122332/72).

Flewelling, Susan L., to John and ? Flewelling, ca.1836, New Castle Township, Westchester County (LDS Batch No. 7122332/72).

Flewelling, Phebe J., to Aaron and ? Flewelling, ca.1838, New Castle Township, Westchester County (LDS Batch No. 7122332/69).

Flewelling, Wm. H., to Benjn. (sic) and ? Flewelling, ca.1838, Yorktown Heights, Westchester County (LDS Batch No. 7122332/70).

Flewelling, Ophelia, to John and ? Flewelling, ca.1839, New Castle Township, Westchester County (LDS Batch No. 7122332/72).

Flewelling, Robert M., to Benjn. and ? Flewelling, ca.1841, Yorktown Heights, Westchester County (LDS Batch No. 7122332/70).

Flewelling, Clarrissa (sic), to John and ? Flewelling, ca.1843, New Castle Township, Westchester County (LDS Batch No. 7122332/72).

Flewelling, Hosea, to Benjn. and ? Flewelling; ca.1844, Yorktown Heights, Westchester County (LDS Batch No. 7122332/70).

Flewelling, Mary D., to John and ? Flewelling, ca.1845, New Castle Township, Westchester County (LDS Batch No. 7122332/72).

Flewelling, Anna M., to Horace P. and ? Flewelling, ca.1856,

New Castle Township, Westchester County (LDS Batch No. 7122332/71).

Flewelling, Cornelia, to Horace P. and ? Flewelling, ca.1857, New Castle Township, Westchester County (LDS Batch No. 7122332/71).

Flewelling, Grant, to Levi and Elizabeth (McCormack) Flewwelin, 23 May 1866, Westchester County (LDS Archive record T000006).

Flewelling, Elizabeth, to Levi and Elizabeth (McCormack) Flewwelling, 8 April 1868, Westchester County (LDS Archive record T000008).

[Note: those records that have only an approximate birth date seem to have been taken from the 1850 U.S. Census, Westchester County, New York.]

**New York marriages from LDS records**

**New York County**

Flewelling, Maria Antoinette, and Seth L. Reynolds, 15 June 1851 (LDS Batch No. 7023116/538540).

**Westchester County**

Flewelling, Amy, and Thomas Raymond, 23 August 1817 LDS Batch No. 8213905/0884817).

Flewelling, Eliza Ann, and John Purdy, 12 October 1831 (LDS Batch No. A458698/458686—"A" indicates adult christening.)

Flewelyn, Betsy, and William T. Travis, 14 February 1839, Chappaqua (LDS Batch No. 8624805/1396232).

Flewellyn, William Henry, and Abby Jane Travis, 4 March 1863 (LDS Batch No. 8611805/1396189).

Flewelling, Julia, and George Van Tassel, (no date) 1866, at Croton Lake (LDS Batch No. A170606/170606).

## Flewellen records from Canada

The following records will be combined with material sent recently by Thomas Murray of Victoria, British Columbia, as well as with material previously published in *Llewellyn Traces*, to document the Flewellings of Canada and New York. The Canadian Flewellings (and other spellings) probably originated, before the Revolution, in America, and migrated to Canada during and after the Revolution, with several families later returning to the States, especially to New York and Michigan.

These birth and marriage records come from the LDS International Genealogical Index (IGI); most were submitted by LDS patrons. Because there is such a diverse group of LDS batch numbers involved with these records we shall omit them as references, remembering that records submitted by individuals for LDS records are usually undocumented. Any record among those printed below that comes from an official source will be identified. In future articles, as we discuss individual families, we shall use batch numbers to help with our linkage.

Like the Llewellyns, the Flewellens varied the spelling of their name, but it seems they were a little more consistent in using an adopted spelling well into several generations.

There are more Flewellin births and marriages from Westchester County, New York, in the Vital Statistics section of this issue. Also in the Vital Statistics section are a good many Fluallen (etc.) marriages in Butler County, Kentucky. Researchers have yet to determine whether, prior to any of the records published here, there was a relationship between the Flewellen families represented by those who went to Canada or were in Westchester County, New York, and those who left records in early North Carolina and Virginia, with migrations to Kentucky and elsewhere.

### Births

**Flewelling, Mary E.**, to (parents unlisted), 30 August 1807, Nashwaak, York, New Brunswick.

**Flewelling, Joseph Griffin**, to Thomas and Hannah (Flewelling) Flewelling, 12 May 1810, Oak Point, Kings, New Brunswick.

**Flewelling, Sarah**, to Abel Gilford and Leah (Harding) Flewelling, 1827, Hampton Parish, Kings, New Brunswick.

**Flewelling, James Leverett**, to

Thomas and Jane (Belyea) Flewelling, 6 April 1828, Oak Point, Kings, New Brunswick.

**Flewelling, Sarah Anne**, to Joseph Griffin and Harriet Elizabeth (Lyon) Flewelling, 4 February 1841, Oak Point, Kings, New Brunswick.

**Flewelling, Robertson Emery**, to Joseph Griffin and Harriet Elizabeth (Lyon) Flewelling, 25 April 1847, Oak Point, Kings, New Brunswick.

**Flewelling, Samantha Amanda**, to Samuel Ezekiel and Ameret (Covert) Flewelling, 24 January 1848, Kingston, Kings,

New Brunswick.

**Flewelling, Sarah Magdalene**, to Samuel Ezekiel and Ameret (Covert) Flewelling, 2 September 1849, Kingston, Kings, New Brunswick.

**Flewelling, Mary Ann Adelia**, to Samuel Ezekiel and Ameret (Covert) Flewelling, 13 July 1851, Kingston, Kings, New Brunswick.

**Flewelling, Lemeul** (*sic*) Ezekiel, to Samuel Ezekiel and Ameret (Covert) Flewelling, 25 December 1853, Kingston, Kings, New Brunswick.

**Flewelling, Stephen Albert**, to Joseph Griffin and Harriet Elizabeth (Lyon) Flewelling, 6 July 1855, Oak Point, Kings, New Brunswick.

**Flewelling, Bradford H. H.**, to Joseph Griffin and Harriet Elizabeth (Lyon) Flewelling, 27 April 1857, Oak Point, Kings, New Brunswick.

**Flewelling, Boyd Alvine**, to Samuel Ezekiel and Ameret (Covert) Flewelling, 1 May 1857, Kingston, Kings, New Brunswick.

**Flewelling, William Scovil**, to Samuel Ezekiel and Ameret (Covert) Flewelling, 5 June 1861, Kingston, Kings, New Brunswick.

**Flewelling, Melissa**, to George and ? Flewelling, 3 September 1861, Chipman, Queens, New Brunswick.

**Flewelling, Edward Augustus**, to Gilford and Catherine (Greenlaw) Flewelling, 22 September 1861, Sussex, Kings, New Brunswick.

**Flewelling, Louise Annette**, to James Leverett and Mary Matilda (Johnson) Flewelling, 31 July 1862, Oak Point, Kings, New Brunswick.

**Flewelling, Elma Agnetta**, to Samuel Ezekiel and Ameret (Covert) Flewelling, 26 February 1863, Kingston, Kings, New Brunswick.

**Flewelling, Leah Bella**, to Gilford and Catherine

(Greenlaw) Flewelling, 27 February 1863, Sussex, Kings, New Brunswick.

**Flewelling, Robert Gilford**, to Gilford and Catherine (Grimlaw) (*sic*) Flewelling, 29 August 1864, Sussex, Kings, New Brunswick.

**Flewelling, Odbur Alman**, to James Leverett and Mary Matilda (Johnson) Flewelling, 31 October 1865, Oak Point, Kings, New Brunswick.

**Flewelling, Charles Henry**, to Samuel Ezekiel and Ameret (Covert) Flewelling, 13 November 1865, Kingston, Kings, New Brunswick.

**Flewelling, Daniel Thomas**, to James Leverett and Mary Matilda (Johnson) Flewelling, 8 August 1866, Oak Point, Kings, New Brunswick.

**Flewelling, Ella Bessie**, to Gilford and Catherine (Grimlaw) (*sic*) Flewelling, 3 January 1867, Sussex, Kings, New Brunswick.

**Flewelling, James Lebaron Street**, to Samuel Ezekiel and Ameret (Covert) Flewelling, 4 September 1867, Kingston, Kings, New Brunswick.

**Flewelling, Izetta Ostell** (female), to James Levett and Mary Matilda (Johnson) Flewelling, 19 April 1868, Oak Point, Kings, New Brunswick.

**Flewelling, Hattie Zilleth**, to Samuel Ezekiel and Ameret (Covert) Flewelling, 25 April 1868, Kingston, Kings, New Brunswick.

**Flewelling, Samuel Herbert**, to Gilford and Catherine (Greenlaw) Flewelling, 4 October 1868, Sussex, Kings, New Brunswick.

**Flewelling, Marvetta Fevina**, to James Leverett and Mary Matilda (Johnson) Flewelling, 7 February 1870, Oak Point, Kings, New Brunswick.

**Flewelling, Albert Alonzo**, to Samuel Ezekiel and Ameret (Covert) Flewelling, (adult christening) 13 September

- 1870, Kingston, Kings, New Brunswick.
- Flewelling, Faustina Oda** (female), to James Leverett and Mary Matilda (Johnson) Flewelling, 26 March 1872, Oak Point, Kings, New Brunswick.
- Flewelling, Clara Josephine**, to Gilford and Catherine (Greenlaw) Flewelling, 12 October 1874, Sussex, Kings, New Brunswick.
- Flewelling, Charles Abraham**, to Abraham Jewell and Margaret Angelina (Snow) Flewelling, 4 January 1884, Fergus, Wellington, Ontario.
- Flewelling, Agnes May**, to William Peter and Susan (Moffatt) Flewelling, 11 January 1890, Carberry, Manitoba, Manitoba.
- Flewelling, Nita Leone**, to Odbur Alman and Rosella Edwina (Whelpley) Flewelling, 8 December 1891, Oak Point, Kings, New Brunswick.
- Flewelling, Alice Anna**, to William Peter and Susan (Moffatt) Flewelling, 24 September 1894, Vancouver, British Columbia, British Columbia.
- Flewelling, Ernest Albert**, to Odber (sic) Alman and Rosella Edwina (Whelpley) Flewelling, 25 May 1895, Oak Point, Kings, New Brunswick.
- Flewelling, Mabel Whelpley**, to Odbur Alman and Rosella Edwina (Whelpley) Flewelling, 2 December 1898, Oak Point, Kings, New Brunswick.
- Flewelling, Elmer Griffin**, to Odbur Alman and Rosella Edwina (Whelpley) Flewelling, 18 April 1902, Oak Point, Kings, New Brunswick.
- Flewelling, Eleanor May**, to Frank and ? Flewelling, 5 April 1909, Saint John, Saint John, New Brunswick.
- Flewelling, Ila Angeline**, to Charles Abraham and Annie May (Brown) Flewelling, 27 November 1909, Lacombe, Alberta, Alberta.
- Flewelling, Harry Charles**, to Charles Abraham and Annie May (Brown) Flewelling, 21 August 1911, Lacombe, Alberta, Alberta.
- Flewelling, Lyle Oswald John**, to Charles Abraham and Annie May (Brown) Flewelling, 10 April 1914, Lacombe, Alberta, Alberta.

**Marriages**

**Flewelling, Isaac**, and Hannah Reynolds, 9 January 1811, Trinity Anglican, Digby, Digby, Nova Scotia (official record).

**Flewelling, Maplet Elizabeth**, and Samuel Monro, 14 October 1813, Trinity Anglican, Digby, Digby, Nova Scotia (official record).

**Flewelling, Abel Gilford**, and Leah Harding, 7 March 1816, Kingston, Kings, New Brunswick.

**Flewelling, Jane**, and William Harding, 7 June 1818, Kingston, Kings, New Brunswick.

**Flewelling, Eleanor Harriet**, and Henry Bulyea, 8 July 1818, Greenwich Parish, Kings, New Brunswick.

**Flewelling, Thomas**, and Jane Bulyea, 7 November 1822, Kings, New Brunswick.

**Flewelling, Charlotte**, and David Bulyea, 15 February 1826, Kings, New Brunswick.

**Flewelling, Mary E.**, and James Brown Gilmore, 12 October 1826, Penniac, York, New Brunswick.

**Fluellen, Mary A.**, and Martin Moore, (no day, month) 1832, Pelham Township, Welland, Ontario.

**Flewelling, Nancy Elizabeth**, and John S. Bulyea, 22 February 1832, Kings, New Brunswick.

**Flewelling, James**, and Mary Elizabeth Travis, 26 Septem-

ber 1834, Indiantown, Saint John, New Brunswick.

**Flewelling, Elizabeth Ann**, and Stephen Bulyea, 5 March 1835, Kings, New Brunswick.

**Flewelling, Joseph Griffin**, and Harriet Elizabeth Lyon, 12 February 1840, Westfield, Kings, New Brunswick.

**Flewellen, Elizabeth**, and David S. French, 25 January 1848, Oxford, Ontario.

**Flewelling, May Elizabeth**, and Gabriel Merritt, 29 February 1848, Clifton, Colchester, Nova Scotia.

**Flewelling, Gilford**, and Catherine Greenlaw, 22 November 1860, Sussex, Kings, New Brunswick.

**Flewelling, James Leverett**, and Mary Matilda Johnston (sic), 7 May 1862, Saint John, Saint John, New Brunswick.

**Flewelling, Thos. G.**, and Matilda Van Loon, 5 January 1863, Oxford, Ontario.

**Flewelling, Hannah A.**, and Isaac Hunt Carle, 27 September 1864, Kings, New Brunswick.

**Flewelling, Joseph R.**, and Magdalen Snider, 27 December 1866, Sussex, Kings, New Brunswick.

**Flewelling, Annie**, and Henry J. Fowler, 22 September 1868, Kings, New Brunswick.

**Flewelling, James Le Baron**, and Eoline Keirstead, 19 March 1874, Kings, New Brunswick.

**Lewelling, Melissa**, and Charles William Hutchins, (no day, month) 1875, Cumberland Bay, Queens, New Brunswick.

**Flewelling, Melissa**, to Charles William Hutchins, (no day, no month) 1875, Cumberland Bay, Queens, New Brunswick.

**Flewelling, Le Baron**, and Kate L. Olive, 11 September 1878, Saint John, Saint John, New Brunswick.

**Flewelling, John E.**, and

Martha Eliza Scott, 28 December 1881, Adolphuston, Lennox And Addington, Ontario.

**Flewelling, Louise Annette**, and Albert Le Baron Worder, 22 February 1882, Oak Point, Kings, New Brunswick.

**Flewelling, Mabel Whelpley**, and George Hedley Patterson, 8 December 1920, Oak Point, Kings, New Brunswick.

**Flewelling, Elmer Griffin**, to Hildred (sic) Muriel Pearl Haslett, (no day) April 1942, Saint John, Saint John, New Brunswick.

**Another Lewellyn minister**

Little is known about the Reverend James H. Lewellyn, a Baptist minister in Virginia and North Carolina. But he caught our attention when he was identified as the father of Richard Jackson Lewellyn, subject of a biographical sketch in the *History of North Carolina*, Vol. 14, 1919, pages 226-227.

The Reverend James H. Lewellyn was born in 1830 and married Sarah Elizabeth Pratt. They were the parents of eight children: Mary Jane, James Robert, Thomas Wilson, Martha Susan, Jemima D., Catherine Elizabeth, Richard Jackson and Franklin T. Lewellyn.

What excites us about this biographical sketch is that it ties this family with that of Thomas Lewellyn II, who was discussed in *Llewellyn Traces 2:1*, pages 4-6.

### Mississippi census, including part of one county enumerated by Isaac Lewallen

It was a pleasant discovery to find that Isaac Lewallen, born ca. 1795 in North Carolina, was responsible for taking the 1850 U. S. Census of the Southern Division of Tishomingo County, Mississippi.

So, we begin our analysis of Llewellyn and Flewellen entries in the 1850 census of Mississippi with Isaac's own entry, which was made 28 November 1850, as household 1038, on page 165 (now micro copy 432, roll 382).

Isaac Lewallen, a 55-year-old farmer, was born in North Carolina and was living in the Southern Division of Tishomingo County, Mississippi, when he entered information on his own family in the 1850 census. Also in his household were Mary, 53, also born in North Carolina, and George, 19, a farmer; Francis (*sic*), female, 18, William, 14, and Joel, 11, all born in Tennessee, and Josephine, 4, and Alonzo Coffield, 3, who were born in Mississippi. Living with Isaac and Mary in their household was William B. (Lewallen), 34, born in North Carolina, listed as a carpenter. He is one of three adults named William Lewallen in the Southern Division of this Tishomingo County census.

On this same census page, in households 1034 and 1035, are Jesse S. Lewallen, 28, born North Carolina, and Thomas Lewallen, 24, born in Tennessee. Jesse's occupation is given as "tanner." Thomas was a farmer.

The entry of Jesse S. Lewallen includes Rebecca, 25, born in Tennessee; Mary, 6; Thomas, 4; William, 2; and Martha, 6 months. All these children were born in Mississippi.

The next entry, that of Thomas Lewallen, includes Emily, 20, born in Alabama, and one-year-old

Roxanna, who was born in Mississippi.

The entries of Jesse S. Lewallen and Thomas Lewallen head page 165; the next households, numbers 1036 and 1037, are those of James Cunningham, ae. 30, born in Tennessee, and Andrew F. Marshall, ae. 45, born in Virginia. The next household, 1038, is that of Isaac, the census-taker.

From this census, we would assume that Jesse S. and Thomas, as well as the William who is in Isaac's household, were sons of Isaac. Whether Mary was Isaac's first (and only?) wife and the mother of William B., Jesse S., and Thomas as well as some or all of the children in Isaac's house cannot be determined from this census. Perhaps some of the children listed in Isaac's house are grandchildren.

By studying the birthplace listings of these Lewallens, it would seem that Isaac went to Tennessee from North Carolina sometime between 1822 and 1826. The census doesn't give us enough information to place a date on his removal from Tennessee to Mississippi.

Isaac Lewallen, "asst. marshal," began taking his portion of the Tishomingo County census on 4 September 1850 and finished by attesting to its accuracy on 28 December. By the time he finished his task he had taken 163 pages of Schedule 1, the census with which we are familiar; 26 pages of Schedule 2, which was a separate enumeration of slaves in the county (Isaac and his "sons" had none); 7 pages of Schedule 3, the mortality schedule; 30 pages of Schedule 4, an agricultural schedule; one page of Schedule 5, known as Statistics of Industry; and one page of Schedule 6, Social Statistics, which included an enumeration of educa-

tional institutions, libraries, newspapers and periodicals, churches, as well as paupers—those who during the year had received "public support." All this totaled 228 ledger-size pages, of which Isaac Lewallen was required to make three copies. The original he submitted to the clerk of his county court; one copy went to the U. S. Secretary of Interior, the other copy to the Mississippi Secretary of State. For his work, Isaac Lewallen received 2 cents for each person enumerated and 10 cents a mile for his travel. Travel was figured by a complicated formula involving the square root of the perimeter of his territory!

It is interesting that Isaac Lewallen varied the spelling of his surname. At the heading of each page of the census sometimes he spelled it "Lewallen" and on other pages it was "Lewellen." His own entry was listed under "Isaac Lewallen," but when, after finishing the census, he wrote a statement certifying his work he spelled his last name "Lewellen."

Also in Tishomingo County, Mississippi, Southern Division, in 1850, were two other William Lewallens. One was William Lewallen (Luvallen?), 59, a farmer who also was born in North Carolina. His was household 903 (page 155), enumerated on 22 November 1850. He and his wife Rutha, 50, born South Carolina, could not read or write. In their household was John, 16, born in Alabama.

On the same page as the William Lewallen just discussed is still another William Lewallen.

This third William, 45, was born in South Carolina. He is listed in household 913, also on page 155, extending onto page 156, taken the same day as that for the William Lewallen in household 903.

Those in the third William's household included Anna, 45;



Lucinda 18; Sammie, 17; Andy, 16; John, 15; Carrol, 14, a male; William, 9; Elisabeth (*sic*), 8; and Rutha I. (?), 4, all born in Tennessee, and Lewis, 2, born in Mississippi. Also in this household was William Pearson, ae.21, born in Tennessee.

Investigation of probable family relationships between most, if not all, of these Lewallen families in Tishomingo County, Mississippi, is material for another article in *Llewellyn Traces*. In it we'll trace Isaac Lewallen back to North Carolina, and trace his sons on to Texas.

At this point we might point out that some entries of the Mississippi census were extremely hard to read. Each entry has been double-checked and where we had difficulty in reading an entry, we've indicated our uncertainty as a question.

Tishomingo County is located in the extreme northeast corner of Mississippi. In the continuation of our analysis of all the Mississippi census entries for 1850 that seem to concern Llewellyns and Flewellens, we'll criss-cross the state from east to west and from north to south.

We go now to the adjoining county of Tippah, where on 18 September 1850 another William, William C. Lewellen (*sic*), was living in District No. 2. This William, 56, was a farmer, born in South Carolina. In his household, number 375, on page 419, Tippah County, Mississippi, were Sarah, 40, born North Carolina; Francis G., 21; John D., 19; George W., 16; and Jesse H., 15, all born in Tennessee, and Ugenan (Eugenia?), 12, a female; Amanda, 9; Polly Ann, 7; William S., 5; Fountain E., 3, and Samuel, 2 months, all born in Mississippi.

Although the dates don't tally with previously published information (see Tradition: 7, *Llewellyn*

*Traces* 2:3, page 44), we believe this is the family of Dr. F. E. [Fountain E.?] Lewellen, son of William and Sarah (Fryar) Lewellen, "natives of Tennessee, and early settlers of Tippah County, Mississippi." Strengthening our theory about Sarah, wife of William in this entry, as being Sarah Fryar are several Fryar and Friar families in Tippah County who have North Carolina and Tennessee connections. We further discuss this family in *Follow-Up*, page 67, this issue.

Also in District No. 2 of Tippah County is O. P. Lewellen, a carpenter, born ca. 1820 in North Carolina. His household is number 32, his entry is on page 395; and the census was taken 31 August 1850. In O. P.'s household were Mary E., 17, born South Carolina, and William, 4 months old, born in Mississippi. Also in the household was D. A. Burnett, 27, a male born perhaps in Tennessee (entry unclear), also a carpenter, as was O. P. Lewellen. We should remember that William B. Lewallen, born ca. 1816 in North Carolina, who was in the household of Isaac Lewallen in Tishomingo County, also was a carpenter.

In the Third Division of Tippah County, in the household of William McNiece, 50, a farmer born in Kentucky, and Sally, 46, born in North Carolina, we find Elizabeth Lewellyn, 17; Adeline Lewellyn, 15; James Lewellyn, 10; and Thomas Lewellyn, 5, all born in Tennessee. It would appear Sally McNiece might be the mother of the Lewellyn children. This is household 220, on page 507, enumerated 11 September 1850.

The adjoining household, number 221, on the same page and taken the same day, is the entry of Joseph Lewellyn, 24, and Elizabeth, 18, both born in Tennessee. These two families probably belong together.

Proceeding west along the top

tier of Mississippi counties, we come to Marshall County. Here, on 30 October 1850, Jesse Lewellen, a farmer, was enumerated. He was 49 years old, born in North Carolina. In this household, number 611, pages 251 and 252, were Ann E., 30, born in North Carolina; Alice, 7; Virginia, 4; Roxanna Hatchett, 12; A. V. Hicks, 10, a female; and Marcella Hicks, 7, all born in Mississippi.

In reading the Marshall County slave schedules (Schedule 2), we find that when the census of slaves in this part of Marshall County was taken on 1 November 1850, Jesse Lewellen listed as his property 11 slaves, male and female, ranging in age from 60 to one year. The slave schedule, formally entitled "Slave Inhabitants," listed the slaves not by any given names but merely by age and sex.

We know of instances in which one member of a family held slaves while others did not, so the fact that one Lewallen held slaves while other Lewallens living nearby didn't is not proof of anything. Jesse may be a brother of Isaac of Tishomingo County. On the slave schedule, Jesse's name is spelled "Louellen."

Next to Marshall County, Mississippi, lies DeSoto County, where we find a Fluellen family, as well as a Lewelling individual.

On 14 September 1850, S. FluEllen (*sic*), 50, born in Tennessee, was enumerated at household 182, on page 326, in the Southern Division of DeSoto County. Also in this household were Lydia B., 49, born North Carolina, and 16 other individuals. Some of these persons appear to be children of S. FluEllen: Lydia A., 19; William, 18; James, also 18, and Laura I. (?), 11, all born in Tennessee, and Augusta W., 7, born in Mississippi, all with the surname FluEllen. Also listed were Nancy Morgan, 28; Martha Mor-

gan, 27; Ann E. Morgan, 11, all born in Tennessee, and Martha I.(?) Morgan, 8; Sophia Morgan, 6, Emily Morgan, 8 (sic); Virginia Morgan, 6 (sic); Dewitt Morgan 3, a male, and Theophilus Morgan, a year-old male, all born in Mississippi. Also in this household were B. McCravent, 21, a male born in Tennessee, and John Acid, 25, born in Ireland. Both were farmers.

S. FluEllen listed his 10 slaves when the census of slaves was taken on 13 September 1850. His enumeration included one male slave 103 years old. Other slaves included three females aged 60, 40, and 25, and six other males from 20 to 40 years old.

It is probable that S. FluEllen was Shaderick Fluellen, who married Lydia Page, in Davidson County, Tennessee, 8 February 1821.

Also in this county, in its Northern Division, was J. A. Lewelling, 25, born in North Carolina, and living, 14 November 1850 when the census was taken, in the household (number 828, page 424) of G. B. Rains, 25 or 29 (unclear), born in Virginia. J. A. Lewelling is listed as an "overseer," probably of the Rains plantation. The slave schedule for this area, taken 13 November 1850, attributes 12 slaves to G. B. Rains. Those slaves ranged from an 80-year-old female down to two year-old male babies.

In the second tier of Mississippi counties, and moving to the east, below Tippah County we come to Pontotoc County, where Joseph Lewallen was located. Joseph Lewallen, 36, a farmer who was born in Kentucky, was enumerated 29 October 1850 in household 1435, on page 161. In his household was Nancy, 32, also born in Kentucky, and five children: William, 14, born in Alabama; and James, 12; Margaret, 10; Martha, 8; and Jane, 6, all born in Mississippi.

Lying west of Pontotoc County,

directly below Marshall County, is Lafayette County, Mississippi. Here on 1 November 1850, William Lewallen, a 45-year-old physician, born in Kentucky, was enumerated. In Dr. Lewallen's household, number 949 on page 293 and extending to page 294, was Leucinda (sic), 45, and James M. (or H.), 21, a farmer; John H., 18, and W. T. M. (a male), 17, both students; Grace H., 15; Sarah M., 7 (sic); Lucinda E., 11, and Robt. P., 9, all born in Kentucky, and Ferris E., 8, a male; George W., 6; and Elizabeth B., 4, all born in Mississippi.

Dropping down two tiers of counties to the central part of Mississippi, we come to Carroll County, where, when the 1850 census of the Northern Division was taken on 18 September, James Lewallen was in the household of Richard A. Towns.

James Lewallen, 30, was born in Tennessee. Richard A. Towns, the 37-year-old farmer with whom James lived, was born in Virginia, as was Elizabeth, 28, the only other person in the household (number 189, page 268). Richard A. Towns owned 44 slaves.

Below Carroll County, and to the east on the Mississippi-Alabama border, is Kemper County. Henry Flewellen (Fleweller?) was living in Kemper County on 29 August 1850 when the census was taken there. Henry Flewellen, 50, was a farmer, born in North Carolina. In his household (number 87, page 145) was Bersheba, 47, born in South Carolina. Also in this home were Cornelius Cread, 23, born South Carolina; Jack C. Cread, 22; Jane Cread, 15; and Ellen Cread, 13, all born in Alabama, and Lafayette Cread, 11; Thomas Cread, 9; Malinda Cread, 7; and Joseph Cread, 5, all born in Mississippi. There is no indication on the census that Henry and Bersheba were

married within the preceding year.

Two other Henrys were in Hinds County, Mississippi, which is below Kemper County and across the state to the west. These two Henrys spelled their name "Flewellyn." Both were born in Louisiana and they probably bear no relationship to Henry Flewellen of Kemper County. Both are on the same census page (185).

The first Henry Flewellyn was 28 years old. In this household (1007, page 185) of adults in addition to Henry are James, 23; Susan, 26; and Nancy, 23. All were born in Louisiana, all with the surname Flewellyn.

In the next household (1008) on the same page is another Henry Flewellyn. He was 35 years old, a farmer also born in Louisiana. In his house, when the enumeration was taken 9 November 1850, were Elizabeth, 25, born South Carolina; Nancy, 7; Thomas, 5; Sarah E., 3; and Martha A., 1, all born in Mississippi.

We took a hard look at the entries for the two Henry Flewellyns, and feel the census taker made an error—either by recording a wrong age for one or both of them, or by mistakenly naming both "Henry." It would seem that these Flewellyns of Hinds County belong together, linked some way with Thomas Fleuellen and Elizabeth Fleuellen, whose deaths were included in the 1850 Mortality Schedule of Hinds County, Mississippi (See Vital Statistics, Mississippi deaths, page 74 of this issue).

Whether Jonathan G. Flewellyn, also of Hinds County, belongs with the Henry Flewellyns is debatable. Jonathan G. Flewellyn's birthplace of Mississippi, in 1821, disrupts the "Louisiana pattern" so far as the births of the two Henrys are concerned. Jonathan's entry reads, 29, born Mississippi, overseer. He is

the only one in his household (1296, page 201), living between George Waller, 42, born Kentucky, and his wife and six children, and Samuel E. Simmons, 32, born Mississippi, and his wife and two children. Perhaps Jonathan G. Flewellyn was an overseer of the plantation or slaves of either or both men. Waller owned 6 slaves, Simmons 17.

Reminded that at an early date a Flewellyn changed his name to "Ellen," we also noted, in Hinds County, Mississippi, the inclusion of James Ellen in the home of Joseph A. Thomas, a 43 year old farmer, born in Mississippi. James Ellen was 4 years old, born in Mississippi.

Others in the Thomas household (number 1395, page 208) when the census was taken 20 November 1850 were Mary A. Thomas, 41, born in Louisiana; and John A. Thomas, 18, and James P. Thomas, 16, who was listed as "merchant," both also born in Louisiana; and Mary F. Thomas, 4, and Caroline J. Thomas, 2, both born in Mississippi; and also Ellen P. Dupree, 13, and Isa Ann Dupree, 11, also both born in Mississippi. We should point out that James Ellen was the only person by the "Ellen" surname in this household.

The census entry preceding that of Joseph A. Thomas in Hinds County was that of Thomas Pace, 28, farmer, born in Mississippi, and Julia A., 28, born Tennessee. Also in this Pace household (number 1394, page 208) were Caroline Nichols, 9; George S. Nichols, 7; Hiram M. Nichols, 5; and Nichols Touchin (Fouchee?), 15. All these children were born in Mississippi.

On the other side of the Joseph A. Thomas home was the household (1396) of John R. Sturdivant, 27, farmer, born in Virginia, and Harriet M., 24, born in Mississippi. There were no children.

Because of the marriage of

Archelaus Flewellyn and Nancy Pace (Query 52-89, *Llewellyn Traces* 1:3, page 58) we copied the three census entries above hoping they might lead to locating James, father of Archelaus Flewellyn. The abundance of other surnames may be a help to Ellen researchers. James supposedly changed his name from Flewellyn to Flew or Ellen or possibly a combination of both.

Rounding out the Llewellyn and Flewellyn census entries in Hinds County (and in Mississippi) is that of William Llewellyn, who was 26 years old, born in England, and a "bookmaker." William Llewellyn is listed, by himself, in household 28, page 122, Hinds County, enumerated 26 August 1850.

We used the *Mississippi 1850 Census Surname Index*, Irene S. Gillis (Shreveport: Gillis Publication, 1972), to locate these census entries on the various rolls of micro copy 432. We'd appreciate any additional information from anyone who has access to other indices for this 1850 census of Mississippi, as well as complete census information (not merely index listings) for any of the other Mississippi censuses. The Gillis index for 1850 lists entries by household number, not by page number, and only by surname.

For information used in our discussion of Isaac Lewallen and his role as assistant marshall in Tishomingo County we consulted *7th Census of the United States 1850, . . . statistics* (Washington: Robert Armstrong, Public Printer, 1853), pages iv, ix to xxv, and 440 to 464.

*Ninnau*, the North American Welsh Newspaper, is published to support the Welsh community in North America. Subscription information is available from *Ninnau*, 11 Post Terrace, Basking Ridge, NJ 07920.

## Migration to Mississippi

With the outbreak of the American Revolution, immigration into the Natchez District (Mississippi) increased. These immigrants were loyalists or those simply not interested in remaining where there was a possibility of battle. Records containing names are scarce, some located in London, others with Spanish records. Names of those with English land grants and a Spanish census of 1792 are contained in Dunbar Rowland's *Mississippi, the Heart of the South*.

The first white settlement in what is now Mississippi was made in 1699 on the Gulf Coast. French explorers built Fort Rosalie at the present site of Natchez in 1700, but there was no attempt at settlement. Fort Rosalie was completed in 1716, a year after a trading post had been established at Natchez. Colonization began in 1718 and small settlements were made on St. Catherine's Creek near Natchez and near present-day Vicksburg, on the Yazoo River. These early French settlements were wiped out by the "Natchez Massacre" in 1729 and the few survivors fled to New Orleans, leaving the Natchez District all but deserted.

By the Treaty of Paris (1763), the Natchez District was ceded to Great Britain by France and Spain, and the boundary of West Florida was extended to include the Natchez District.

Following the Treaty of Paris, the British governors of West Florida began making grants of land; settlement from the American colonies increased. After the American Revolution, some of the smaller land grants, as well as those re-granted by the Spanish government, were ratified. Old Fort Rosalie was "reactivated" with the name of Fort Panmure and was staffed by an English garrison.

When Spain declared war against Great Britain in May 1779, the Natchez District, as well as all of

West Florida except Pensacola, fell to the Spanish. Many Americans fled to Pensacola or to unsettled Indian lands to the north, only to return soon to the District, which between 1780 and 1798 saw a population growth.

The treaty of San Lorenzo in 1798 transferred the territory to the United States. The territory included the Natchez District as well as territory extending east from the Mississippi River to the state of Georgia. The territory's southern boundary was the same as today's boundary between Louisiana and Mississippi, except for a small portion known as the "Coast Addition," and its northern boundary was a line from the mouth of the Yazoo River running eastward to Georgia. All lands north of this boundary to the Tennessee border belonged to the Choctaw and

Chickasaw Indians. What is now Alabama was largely Choctaw land. White settlements existed along the Tombigbee river and in the northern portion of today's Alabama.

Settlement grew rapidly, with most settlers coming from southern states, although Adams County was settled largely by a group of immigrants from New Jersey.

There were five main routes of migration into the Mississippi Territory: by way of Tennessee and due south into the present state of Alabama; southwest by way of the Natchez Trace; along the Holston, Tennessee, Ohio, and Mississippi Rivers to the Natchez District; by the southern route from Georgia, and up the Mississippi River by way of New Orleans.

By 1812, the boundaries of the territory had been expanded to include all of today's Alabama and

Mississippi. Indian titles to land in the area remained in effect until 1832.

When the 1810 census of Mississippi Territory was taken, Old Natchez District and a part of the Indian Cession of 1805 had become Adams, Jefferson, Claiborne, Wilkinson, Franklin, Amite and Warren counties. Washington County in that census included all of today's Alabama. Wayne County included that part of the 1805 Indian cession east of the Pearl River and west of Washington County.

When Mississippi was admitted as a state in 1817, a north-south line divided the area, and two years later the area to the east of the dividing line became the state of Alabama.

Reference: *Early Inhabitants of the Natchez District*, Norman E. Gillis (Baton Rouge, 1963), pp.1-5.

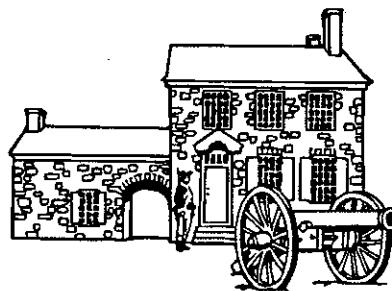
## Military records

### The Revolution

Alexander Lewellen appears in Elizabeth City County, Virginia, on the "List of Persons who Furnished Supplies" [for Revolutionary forces] and made public claims. This undated record is credited to the Virginia Archives, and is on page 158 of *Wills & Administrations of Elizabeth City County, Virginia, 1688-1800*, Blanche Adams Chapman (Baltimore: GPC, 1980).

This Alexander Lewallen does not seem to be Alexander Flewellen (1762-1821) who gave service as a private in North Carolina (See *Llewellyn Traces* 1:1, page 8).

[Other Llewellyns mentioned in *Wills & Administrations of Elizabeth City County, Virginia, 1688-1800*, are Frances Lewellin and Alexander Lewellings (*sic*) on the 1782 tithable list, page 148; John Lewelling, who in 1786 had land in Warwick County, Virginia, page 9;



Alexander Lewelling, who in 1782 and 1783 witnessed wills, pages 79 and 80. All these records were created in Elizabeth City County, Virginia, an area which at one time or another also was known as New Norfolk, Upper Norfolk, Lower Norfolk, and Nansemond.

### Philadelphia Militia, 1780 and 1783

Morris Llewellyn was a lieutenant in 5th Company, Third Battalion, Philadelphia County (Pennsylvania) Militia in 1780, in the command of Lt. Col. James Barry, Esq., and

Major Maybury Jolly, Esq. In 1783 Morris Lewellin (the same man?) was lieutenant in 1st Company, Fifth Battalion of the Philadelphia County Militia. (Reference: *Pennsylvania Archives, 6th Series, Vol. I, pages 720, 861, and 949.*)

### Civil War

John Lewallen, Jr., was in Company A-B, 1st Regiment East Tennessee Volunteers. He was born ca.1843, in Anderson County, Tennessee. He enlisted at age 20, on 4 July 1863 at Lancaster, Kentucky, for three years. John Lewallen, Jr., was 5 ft. 2 in tall, of fair complexion with blue eyes and light hair. He was mustered in at Nashville and was on the company muster roll in June 1865.

John Lewellin, Sr., was in Company B, 1st Regiment East Tennessee Infantry. He was born ca.1838, and enlisted at Jacksboro, Tennessee, for three years on 1

August 1861 at the age of 23. He was mustered in on 16 August 1861 at Barbourville, Kentucky. Reported sick in hospital at Murphysboro, Tennessee, on 18 January 1863. He was mustered out 17 April 1864.

Reference: *Llewellyn, Lewallen, Luallin, etc., etc.* . . . , Billie Harris (Sacramento: 1981), page 154, attributed by the author to the Tennessee Archives.

### Cherokee Indian War

#### Widow's pension application

Rhoda Leuallen Smith, widow of Aaron Smith, applied for a widow's pension under the act of 27 July 1892 in Carroll County, Georgia. In her petition, dated 16 September 1892, Rhoda stated that her husband Aaron Smith served in the Cherokee Indian War and was discharged in 1838.

[This item turned up in a most interesting way. Jackie Frank Strickland, Rockwall, Texas, attended a genealogical seminar in Dallas and Rhoda's pension application was used as an example of a pension application by the lecturer, Lloyd Bockstruck Jackie sent us the details.

[You never know where or when Flewellens or Llewellyns will appear!]

### More biographical sketches

#### Felix Lewellen and his sons Thomas and Samuel D. Lewellen of Missouri

The following three biographical sketches of Felix Lewellen and two of his sons, Thomas and Samuel D., are from *History of St. Clair County, Missouri, 1883*, pages 1135 and 1136.

#### Felix Lewellen

Felix Lewellen, section 34, is a Virginian by birth and was born 5 November 1822. His parents were Samuel and Elizabeth Lewellen, nee Gough, also natives of Virginia.

About the year 1834 the family removed to Indiana and settled in Delaware County, being among the early settlers there. They had 12 children, of whom the subject of this sketch is the youngest. He grew to maturity in his native county, and was married in the spring of 1840 to Miss Margaret Tharp, a daughter of Alexander Tharp. They had five children: William M., of Osceola, Elizabeth (wife of Mr. Lillard), Beersheba (wife of William Hodgins), Sarah (wife of Mart Boots), and Thomas.

Mrs. L. died in Indiana in the summer of 1849. Mr. Lewellen was subsequently married to Miss Susanna Hamilton. There are six children of this union: Rebecca, Samuel, Margaret, Jackson, Timo-

thy, and Drusilla.

Mr. Lewellen lost his second wife, who died in St. Clair County, 16 January 1862. He was married to his present wife, then Mrs. Nancy Ann Weddle, and a daughter of Jacob Beaver, in the spring of 1865.

After his first marriage he resided in Indiana about 15 years. In the fall of 1855 he came to Missouri and located on the farm where he now resides, he having at this time 460 acres. Mr. Lewellen is a thrifty and successful farmer and one of the leading citizens of the county.

#### Thomas Lewellen

The subject of this sketch was born in Delaware County, Indiana, 22 December 1848, being the son of Felix and Margaret (Tharp) Lewellen.

In 1855 the family removed to Missouri and located in St. Clair County. Thomas grew up on his father's farm and was married 4 August 1872 to Miss Sarah Berry, a daughter of Enoch Berry. She is a native of Moultrie County, Illinois. They had three children: Verna, William A., and Homer.

After his marriage, Mr. Lewellen settled on a farm in this township,

coming on his present place in section 14 in August 1878, and he now has 560 acres. Mr. L. devotes considerable attention to the feeding of cattle.

#### Samuel D. Lewellen

Samuel D. Lewellen, farmer and stock feeder, section 21. The subject of this sketch owes his nativity to Delaware County, Indiana, where he was born 19 January 1853. His father, Felix Lewellen, married Miss Susanna Hamilton in Delaware County, Indiana. Samuel removed to Missouri with his parents in 1855 and here his youthful days were passed in tilling the soil.

He was married in this county 4 June 1875 to Miss Mabel Weddle, a daughter of Alexander Weddle. She is a native of Bates County, but was reared in St. Clair. Mr. Lewellen has a family of three children: Elmer Lee, Claud E., and Maud.

His farm contains 320 acres of land, all fenced, with 180 acres in cultivation. He feeds about two car loads of steers yearly and about fifty hogs.

#### Welsh words

The ..... y, yr  
In or at ..... yn  
This ..... hwn  
From or by ..... o  
From, by, or with ..... -gan  
Native ..... genedigol

## John R. Llewellyn, descendant of Maryland Llewellyns . . . continued from page 68

Llewellyn who was born 1714, Sarah "Saidee" Cordell Llewellyn, oldest daughter of John Richard Llewellyn, indicate this was her understanding of her lineage.

John Llewellyn, the probable grandson of the first John in Maryland, was born 26 August 1714 in St. Mary's County, Maryland. On 7 September 1740, he married Elizabeth (or Mary) Jordan and, according to DAR records, had a daughter, Margaret, and a son, John. His father apparently was Richard Llewellyn, son of the first John and his wife Audrey ( ? Cox), who married William Tayland (Taylard) after John's death ca. 1698. Audrey ( ? Cox Lewellyn) Tayland left her will in St. Mary's County, Maryland, dated 1721, in which she named her son Richard Llewellyn and his children Margaret and John.

It is because there is confusion in the generation following the original John, and the possibility that John and Audrey had more than the one son Richard, perhaps including sons named John and Samuel, and perhaps a Thomas, that we are unable to connect the younger generations directly with John and Audrey ( ? Cox) Lewellyn.

The Richard Llewellyn who was in St. Mary's County, Maryland, records in 1706, the same year a Samuel Llewellyn was in a record of Ann Arundel County, Maryland, probably was the son of John and Audrey, the son named in Audrey's will. Perhaps Samuel of Ann Arundel County is another son and is the same Samuel Luellin who had married Anne Kelly in Somerset County, Maryland, 30 March 1684.

Richard Llewellyn married Jane, daughter of Thomas Orrell of Charles County, Maryland. No marriage record has been found; one family account (undocumented) states that Richard and Jane were married between 1700 and 1712.

As previously mentioned, at least

two children were born to Richard and Jane: Margaret and John. These children were born after 1700, because guardians were named for them when their mother Janel drew her will 7 August 1721 (probated 22 December 1722). At the time of her will, Jane ( ? ) Llewellyn owned a plantation or family home named "Green Spring."

The two children, Margaret and John, were named in their grandfather Orrell's will in 1719, and in their grandmother Audrey Lewellyn-Taylard's will in 1721.

Our problem with the genealogy of this family occurs at this point because some records say Richard Llewellyn's wife was named Jane Justinian. Clearly the wife of Richard was the daughter of Thomas Orrell. We can think of two possibilities: Jane Orrell married a Justinian before she married Richard Llewellyn, or we are dealing with two Richards and two Janes. The tendency of this family to name children with surnames and to repeat given names is obvious. Richard and Philippa (Bate) Llewellyn, parents of John Richard Llewellyn of Chicot County, Arkansas, had a son named Justinian. We have found no records made by the Justinian family to help with identification of Jane ( ? ) Llewellyn.

John Llewellyn (1714-1785) is recognized by DAR as a Revolutionary patriot because he was a member of the Committee of Safety of St. Mary's County, Maryland, in 1775 and 1776. It was the family warehouse in which food for the Revolutionary troops was stored in 1778 ("Llewellyn Place Names," *Llewellyn Traces* 2:3, page 43). John Llewellyn died in October 1785.

On 7 September 1740, John Llewellyn had married Elizabeth (or Mary) Jordan (?-ca. 1811). Records are inconsistent when listing the given name of John's wife. Their children included

Richard (1741-ca. 1832), who married Philippa Bate; Sally, who died young; Mary Jane (ca. 1753-ca. 1816), who first married Thomas Key, a distant cousin of Francis Scott Key, and second John Briscoe; Margaret who married William Eden; Charles, born 1758, who probably married (we believe no record has been carried forward in this branch of the family); and perhaps John and James, who may have been twins. John probably married; James probably died young. These two sons, John and James, are included in an undocumented family record; we have found no evidence of them elsewhere.

Richard Llewellyn's marriage to Philippa Frances E. Bate, daughter of Dr. James Smalley and Susanna (Bond) Bate, took place on 7 October 1786. Sometime before 1803 the family went from Maryland to Charles Town, Jefferson County, (West) Virginia. Sometime after 1805 they moved to Louisville, Jefferson County, Kentucky. Because both of these removals were to Jefferson Counties, there is much confusion about the location of this family in the early 1800s.

Children of Richard and Philippa (Bate) Llewellyn were Margaret Eleanor, born 1787, who, on 26 December 1805, married John A. Throckmorton; Anna Bond, born 1789, died an infant; Maria Jordan, born 1790, who married, in 1822, Rev. William Baber (often referred to as "Baker"); Jordan, born 1793, who died unmarried in 1835 in Louisville; Eliza Bate, born 1795, who married, in 1823 in Louisville, Henry Chew Dorsey (see their marriage license, *Llewellyn Traces* 1:3, page 56); Charles L., born 1797, who married Sarah Brown and who died 1821 at the age of 24; Susannah (Sarah) Ann Bond, born 1802, who married, in 1828, Warner Throckmorton; John Richard, born 1803, who married, in 1837, Susan Humphreys; and Justinian, born 1805, who died unmarried.

The will of Susanna (Bond) Bate,



mother of Philippa (Bate) Llewellyn, dated 6 November 1806 and probated 2 March 1807 in Jefferson County, Kentucky, names her daughter and three of her granddaughters: Maria, Eliza, and Susanna Llewellyn (*sic*).

Philippa (Bate) Llewellyn died 2 March 1821 in Louisville; burial was in the Bate family burial ground, Jefferson County, Kentucky. Richard Llewellyn drew his will 20 December 1829; it was probated 3 September 1832, in Jefferson County, Kentucky.

Recently subscriber Geneva Curtis Wilson of Omaha, Nebraska, found John Richard Llewellyn in the *Humphreys Genealogy*. Material in this family history substantially reinforces data already in our files.

A good deal of the information about John Richard Llewellyn in the *Humphreys Genealogy* is in a series of family letters. Since these are letters, undocumented, we can only consider the information contained therein as hearsay, although much of it is confirmed by other sources.

According to the *Humphreys Genealogy*, John Richard Llewellyn married Susan Humphreys, daughter of David and Catherine (Keyes) Humphreys, 27 September 1837 in Charles Town, Jefferson County, (West) Virginia. David Humphreys, was the son of John and Ann (North) Humphreys of Chester County, Pennsylvania.

John Richard Llewellyn, whose census entry taken 27 September 1850 shows him in Chicot County, Arkansas, "ae.46, born Virginia," was born 17 November 1803. His daughter Saidee Llewellyn wrote, in one of her letters reprinted in the *Humphreys Genealogy*, that he was born near Charles Town, in Jefferson County, (West) Virginia. An undocumented reference contained in *Arkansas DAR Genealogical Records* gives his birthplace as Cecil County, Maryland. We have found no records in Cecil County relating to this family.

While still a child, John Richard

Llewellyn went with his parents and other family members to Louisville, Jefferson County, Kentucky.

According to tradition, John Richard Llewellyn met Susan Humphreys in Jefferson County, Virginia, while he was there visiting two of his sisters, both of whom married Throckmortons. John Richard Llewellyn married Susan Humphreys at Charles Town, Jefferson County, Virginia, 27 September 1837. She was born 25 April 1815 at Charles Town. Both she and John died at their home, "Llewellyn Place," in Chicot County, Arkansas. John died 1 July 1873; Susan died 4 November 1894.

John Richard Llewellyn accumulated a fortune at Louisville, Jefferson County, Kentucky, and then moved to Vicksburg, Warren County, Mississippi, where he lost most of his property in the financial crisis of 1837-1838. Among his assets was a plantation at Spanish Moss Bend in Chicot County, Arkansas, where he moved in 1839. He operated this plantation with slaves inherited from his father, Richard Llewellyn.

In Chicot County, John Richard Llewellyn for many years was civil engineer of the Levee Board. At one time he was a member of the Arkansas Legislature. The Llewellyn plantation, many acres lying along river banks, was ruined during the Civil War. The family often told how John Richard Llewellyn set fire to five hundred bales of cotton to keep them from falling into Yankee hands. Susan (Humphreys) Llewellyn was a member of the committee formed to buy and restore Mount Vernon.

The children of John Richard and Susan (Humphreys) Llewellyn, according to Sarah (Saidie) Cordell Llewellyn, their daughter, were Eugene, born 1838; Sarah (Saidie) Cordell, born 1840; Ellen Catherine, born 1843; Adelle, born 1844, who married William Henry Elder in 1870; Lucy Throckmorton, born 1847, who married William Albert Smith; Edwyl, born 1849,

who married in 1891 Bettie Lee Carlton; Richard, born 1856, and Thomas Newton, born 1857.

We note discrepancies in names, ages, and birthplaces, when comparing the 1850 census of this family with Saidee Llewellyn's letters and with other sources. The census lists the children as Eugene Llewellyn, ae.13, born Virginia; Sarah Cordell, ae.12, born Mississippi; Ellen Catherine Cordell, ae.10, born Mississippi; Adelia Llewellyn, ae.8, born Arkansas; Lucy Throckmorton, ae.5, born Missouri; Adna (*sic*) Llewellyn (female), ae.3, born Arkansas; and David R. Llewellyn, ae.1, born Arkansas.

Based upon the census information, it would appear that the Llewellyn family didn't move to Arkansas until sometime after 1840.

Evidently the 1850 census-taker interpreted some of the children's middle names as surnames. It was "Cordell" and "Throckmorton" in this entry that caught our eye, enabling us to connect this family with the Maryland Lewellyns. "Cordell" probably came about because of several marriages in the Humphreys family to Cordells, and not because of a relationship with the family of Thomas Llewellyn II (*Llewellyn Traces* 2:1, pages 5 through 7) which had a marriage into the Cordell (*sic*) family. Until we read the *Humphreys Genealogy* we believed there might have been a connection between the families of John R. Llewellyn and Thomas Llewellyn II.

Some of the letters published in the *Humphreys Genealogy* were written by Miss Saidee Llewellyn to a cousin Janet (Humphreys) King (1839-1929). She wrote one from Gaines Landing, Chicot County, Arkansas, in 1897, in which she stated, "My mother thought the [Humphreys] family was of Welsh descent as the Llewellyn's are. My father had in the old family Bible record of his family back as far as 1706—we have it yet."

In another letter, written from Memphis perhaps in 1898, when

Saidie Llewellyn was living with her niece, Maude (Elder) Lewis, daughter of Saidie's sister Adele, she gave the birth and death dates for John Richard and Susan (Humphreys) used in this account.

Saidee goes on to say, "My father's family came from Wales to Maryland with Lord Baltimore. We have the old family Bible of several generations. It was published in seventeen hundred and something—bound in leather in perfect preservation. His father was Richard Llewellyn, mother Phillipa Bate, his grandfather was John Llewellyn, grandmother Mary Jordan [in most accounts her name is given as Elizabeth], great grandfather was Richard Llewellyn and great grandmother Miss ?Jestine? (*sic*). One cousin married Edmond Key, near relative of Francis Key who wrote the Star Spangled Banner [an aunt married Thomas Key, distant cousin of Francis Scott Key; their son was Edmond Key]. One married a son of Richard Henry Lee of the Revolution [we haven't confirmed this marriage or its principals], one of his Aunts was a Mrs. Eden [Margaret Llewellyn married William Eden]. She left a fortune to his sister Aunt Margaret Elenor who married John T. Throckmorton, lived in their fine old home 'Roxton' in Jefferson County, [West] Virginia. One sister married Mr. Baber [Catherine Llewellyn], one child died without issue; one married Mrs. D...y, have two children—do not know if any are alive—one lived in Ky, one in Ohio [we haven't placed this person, the marriage, nor the two children], my father's brothers Jorden [Jordan], Charles, and Justinian died without issue."

Saidee Llewellyn's final paragraph in this letter of ca. 1898 continues, "My family, Eugene, Richard, Newton are unmarried, live in Chicot County, Arkansas. Edwyl married in 1891 Miss Bettie Carlton of Virginia. Have three little girls—oldest nine years [these daughters were Edwylle, Adelle,

and Sue Humphreys Llewellyn]. He died suddenly 8 April 1904. My sister Lucy Throckmorton Llewellyn married William Albert Smith of New Orleans—died one year after marriage, in 1873, no children. My sister Ellen Llewellyn died some years ago—1895. My sister Adele married W. H. Elder of St. Louis, of a Maryland family—his mother, Miss Scott, was a relative of my father's—in 1870 [we have been unable to make a connection here with the Scott family]; lived at first in St. Louis, now living in Lake Village, Arkansas. Their son George Elder lives there also, married Miss Bagby of Virginia, have two children—Cecil girl four, boy George 2 yrs. Maud now Mrs. James Berkly Lewis married ten years ago—four children Harold, nine; Raymond, seven; Llewellyn, three; James not yet a year old. I live with them in their lovely home here in Memphis. [Adele]'s daughter Florence Elder married three years ago to W. D. Robinson, lives in Phoenix, Arizona—have no children."

She concludes, "I hope I have written a correct and intelligent letter of dates and all as it should be but with my little ones [the children of Maud (Elder) Lewis] talking around me I fear I have not done justice to the subject most interesting to me. I do hope you will send me a copy of your work—and with much affection, I am your cousin, Saidee Llewellyn."

Llewellyn Bible records may have been used for the material submitted to the DAR Genealogical Records Committee by the Arkansas State Society, NSDAR, and by the Missouri State Society, NSDAR, included as references below. However, none of the material in these reports is documented as having been taken from Bible records. These typescript records are filed in the DAR Library, Washington, D.C.

References: Abstract from the first 131 wills of Jefferson County,

Kentucky (then Virginia), September 1783-June 1813, William Gammon, compiler, in *National Genealogical Society Quarterly*, Vol. VI, No. 3, October 1917, pages 49 and 50; *Arkansas DAR Genealogical Records* (typescript, n.d.) page 34; *Arkansas DAR Genealogical Records*, records of General Henry Lee Chapter (Lake Village, Chicot County, Arkansas: typescript, May 1974), page 40; *Calendar of Divisions*, Book No. 1, Jefferson County (Kentucky), Parts three and four, 1833-1853 (typescript), pages 9 and 10, at The Newberry Library, Chicago; *Calendar of Early Jefferson County, Kentucky, Wills*, Will Book No. 3, December 1833-August 1845 (typescript), pages 27, 47, and 171, at The Newberry Library, Chicago.

*Early Kentucky Settlers, the records of Jefferson County, Kentucky* (Baltimore: GPC, 1988), pages 241 and 242, 342 and 343; *Humphreys Genealogy*, Allan Sparrow Humphreys (Fayetteville, Arkansas, 1954), pages 24 through 26, 56 through 62; *Inventory and Settlement Book No. 4, 1820-1823*, Jefferson County, Kentucky, (typescript), page 41, at The Newberry Library, Chicago; *Llewellyn Traces* (Pueblo, Colorado), Volume I, No. 1, 1989, pages 8, 12 and 13; No. 2, page 35; No. 3, page 56, and Volume 2, No. 3, 1990, page 57; *Magruder's Maryland Colonial Abstracts, Wills, Accounts, and Inventories*, James M. Magruder, Jr., compiler and mimeographer (Annapolis: typescript, n.d.), Volume I, 1775-1777, pages 39 and 40, and Volume III, 1774-1777 (*sic*), page 46, at The Newberry Library, Chicago; *Missouri [DAR] Genealogical Records Committee, Report* (typescript, 1934), pages 52 through 54; National Society, Daughters of the American Revolution, membership applications; "Throckmorton Genealogy" in *Genealogies of Virginia Families* (Baltimore: GPC, 1981), Vol. V, page 94.

**Queries**

**39-90** Oops! Query 49-90 in Volume 2:3 should be numbered 39-90. Please change the number in your records.

**40-90** Who was Polly Ann Luallen who married Alfred Daniel? Polly Ann was born 1812 in Tennessee, her husband Alfred Daniel 1811 in Illinois? Marriage when? Where?

**41-90** Hunting marriage info for Meshach Lewellen (Lawallin) and Hannah Brooks, probably ca.1789 or 1790, perhaps in Washington County, Pennsylvania, although might be in Virginia or North Carolina, or territorial Kentucky, Tennessee, or even Mississippi. Eldest daughter's census info indicates her birth ca.1790 in "Tenn.," although census entry could be interpreted "Penn." Can you help?

**42-90** Need parents of Charles Luellen who married Mary Elizabeth Brewer. They had a son, Archie Isic (*sic*), born 1902 in Little Rock, Pulaski County, Arkansas.

**43-90** Who was the William Luallen (Lewallen, Lewellen, Llewellyn) who died in Warren County, Kentucky, ca.1811? His wife was Miriam, children mentioned in will but not named. His children may be known as being "of Todd County, Kentucky," because about 10 years after William's death the part of Warren County in which he lived became Todd County. Can you help?

**44-90** Hunting marriage bond for Wiley and Mary "Polly" ? Luallen, probably in North Carolina, ca.1815.

**45-90** Who was William T. Llewellyn, who left a will in Logan County, Kentucky, 1827?

**46-90** Need data on Joseph Francis Llewellen who lived in Marion,

Marion County, Kansas, in the 1930s? His parents, family?

**47-90** Who was the young Wiley Lewallen in Henderson County, Tennessee, in 1850, with daughter named Araminta? [Note: this query comes from Nancy Buell, who supplied information for the reply below to Query 20-90.]

**48-90** Who was Abigail Lewellen (1815-1890) who was born in Kentucky and died Putnam County, Missouri? She married Francis S. Snedigar 1833 in Ralls County, Missouri.

**49-90** Which Lewellan was known as "Judge Lewellan" in Marshall County, Mississippi, ca.1842?

**50-90** Searching for John A. Lewallen who was born about 1837 in Kentucky. His wife was Margaret J. Hearne, daughter of Warren and Jane (Alexander) Hearne. Need parents, etc., for John as well as his marriage to Margaret. Their seven children were born between 1857 and 1875, all in Kentucky.

b.TN; R. E. Lewallen, wife, ae.45, b.MO, both parents b.TN; children: Angeline, ae.16, b. TN; Ewel (male), ae.9, b.TN; and also in household Richard Moore, ae.11 (*sic*), b.TX, both parents b.TX, listed as "hired." There are several Lewellen and Lewallen entries in Bell County in this census many of which do not seem to belong to the same family.

**20-90** Wylie Lewallen, a farmer, was born in North Carolina ca.1795. He was in McMinn County, Tennessee, in 1830, and then moved to Cherokee County, Alabama, where he and his family were enumerated in household 362, page 173, of the 1850 U.S. Census. After the Civil War he went to Texas and died in Bell County, sometime in the 1870s. His wife, Mary "Polly," also was born in North Carolina ca.1795, and died in Texas after 1880. She is listed as a widow in the 1880 census of Bell County, Texas. Both Wiley and Polly are buried in Lewallen Cemetery, Troy, Bell County, Texas. Their children included James Calvin (called Calvin), Henry, Jesse, Andrew, Sarah Jane (called Jane), Rhoda, and Eliza. Nancy Buell, Brookline, Massachusetts, who sent this information, believes there probably were older children in this family, since the son Calvin was born when his mother Polly was 27 years old.

**Replies**

**4-90** Is there any connection between Ewel of this query and the Ewel Lewallen, son of S. and R. E. Lewallen, listed in the 1880 census for Bell County, Texas? Complete census entry: S. Lewallen (male), ae.37, farmer, b.TN, both parents

**Queries:** Queries are accepted only from subscribers. Submit as many as you wish, but please write each on a separate 8 1/2"x11" sheet of paper, preferably typed and double-spaced. There is no charge for queries, which we'll publish in the order we receive them, as space permits. We reserve the right to edit all queries to conform to the style of *Llewellyn Traces*, and to combine queries that essentially are duplicates.

**Replies:** If you have information about a query, please write us so that we may share it with all subscribers. Please include the source of the information contained in your reply. Each query is identified by a number. Please identify your reply by the same number. Your reply will be published in *Llewellyn Traces*, identified with the query to which it pertains and with your name. If you don't want to be identified with your published reply, please so indicate. Your reply also will be forwarded to the person who submitted the query. If you'd like to have us put you in contact with that person, please include a self-addressed stamped envelope. We'll pass it along.

All correspondence for *Queries . . . Replies* should be addressed to Queries, *Llewellyn Traces*, 781 McCarthy Boulevard, Pueblo, Colorado 81005-9704.

